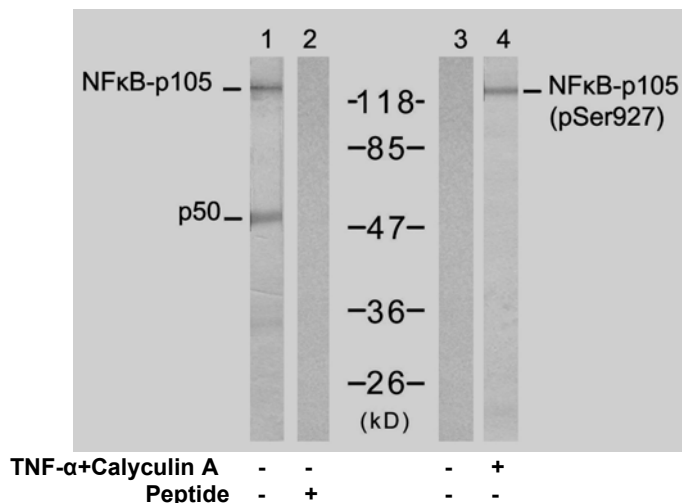


Rabbit anti NFκB-P105/P50 (pSer927)

- Catalog Number:** pAP11312
Amount: 100μl (for 10 Western blotting)
Swiss-Prot No. : P19838
Form of Antibody: Rabbit IgG in phosphate buffered saline (without Mg²⁺ and Ca²⁺), pH 7.4, 150mM NaCl, 0.02% sodium azide and 50% glycerol.
Storage/Stability: Store at -20°C/1 year
Immunogen: The antiserum was produced against synthesized phosphopeptide derived from human NFκB-p105/p50 around the phosphorylation site of serine 927 (C-D-S^P-G-V).
Purification: The antibody was affinity-purified from rabbit antiserum by affinity-chromatography using epitope-specific phosphopeptide. The antibody against non-phosphopeptide was removed by chromatography using non-phosphopeptide corresponding to the phosphorylation site.
Specificity/Sensitivity: NFκB-p105/p50 (Phospho-Se927) antibody detects endogenous levels of NFκB-p105/p50 only when phosphorylated at serine 927.
Reactivity: Human, Mouse, Rat
Applications: WB: 1:1000
References: Hou S, et al. (2003) J Biol Chem. 278(46): 45994-45998.
 Baeuerle P A, et al. (1994) Annu Rev Immunol. 12:141-179.
 Baeuerle P A, et al. (1996) Cell 87:13-20.
 Haskill S, et al. (1991) Cell 65:1281-1289.



Western blot analysis of extract from HT-29 cells, untreated or treated with TNF-α and Calyculin A, using NFκB-p105/p50 (Ab-927) antibody (AP21312, Lane 1 and 2) and NFκB-p105/p50 (Phospho-Ser927) antibody (pAP11312, Lane 3 and 4).

For Research Use Only

Contact & Ordering Information: Angio-Proteomie, 11 Park Drive, Suite 12, Boston, MA 02215, USA. Fax: (480) 247-4337, angioproteomie@gmail.com