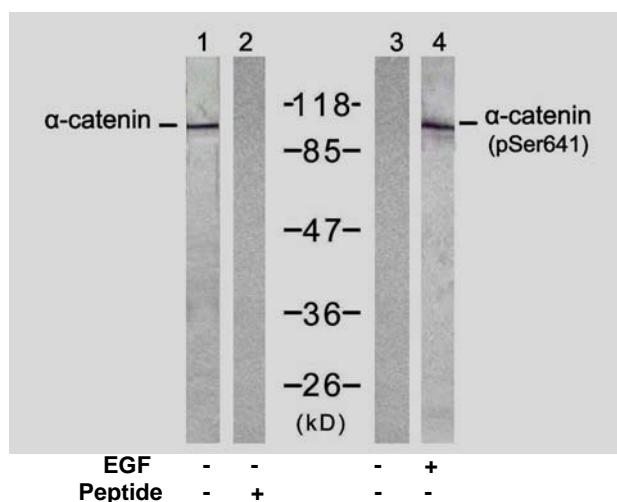


Rabbit anti α -catenin (Phospho-Ser641)

- Catalog Number:** pAP11330
Amount: 100 μ l (for 10 Western Blotting)
Swiss-Prot No. : P35221
Form of Antibody: Rabbit IgG in phosphate buffered saline (without Mg²⁺ and Ca²⁺), pH 7.4, 150mM NaCl, 0.02% sodium azide and 50% glycerol.
Storage/Stability: Store at -20°C/1 year
Immunogen: The antiserum was produced against synthesized phosphopeptide derived from human α -catenin around the phosphorylation site of serine 641 (D-D-S^P-D-F).
Purification: The antibody was affinity-purified from rabbit antiserum by affinity-chromatography using epitope-specific phosphopeptide. The antibody against non-phosphopeptide was removed by chromatography using non-phosphopeptide corresponding to the phosphorylation site.
Specificity/Sensitivity: α -catenin (Ab-641) antibody detects endogenous levels of α -catenin only when phosphorylated at serine 641.
Reactivity: Human, Mouse
Applications: WB: 1:1000
References: Hwang, S.G. et al. (2005) J. Biol. Chem. 280, 12758-12765
Drees, F. et al. (2005) Cell 123, 903-915.
Yamada, S. et al. (2005) Cell 123, 889-901.
Kobiela, A. and Fuchs, E. (2004) Nat. Rev. Mol. Cell Biol. 5, 614-625.



Western blot analysis of extract from A431 cells, untreated or treated with EGF (200ng/ml, 30min), using α -catenin (Ab-641) antibody (AP21330, Lane 1 and 2) and α -catenin (Phospho-Ser641) antibody (pAP11330, Lane 3 and 4).

For Research Use Only

Contact & Ordering Information: Angio-Proteomie, 11 Park Drive, Suite 12, Boston, MA 02215, USA. Fax: (480) 247-4337, angioproteomie@gmail.com