



RayBiotech, Inc.

3607 Parkway Lane suite 200
Norcross, GA 30092
Tel: 770-729-2992, 1-888-494-8555
Fax: 770-206-2393
Website: www.raybiotech.com
Email: info@raybiotech.com

Certificate of Analysis and Data Sheet Rabbit anti-Der P1 antibody

Catalog No.
130-10020

Isotype:
Rabbit Ig G

Specieis:
Dermatophagoides

Accession No:
ABG76196

Description

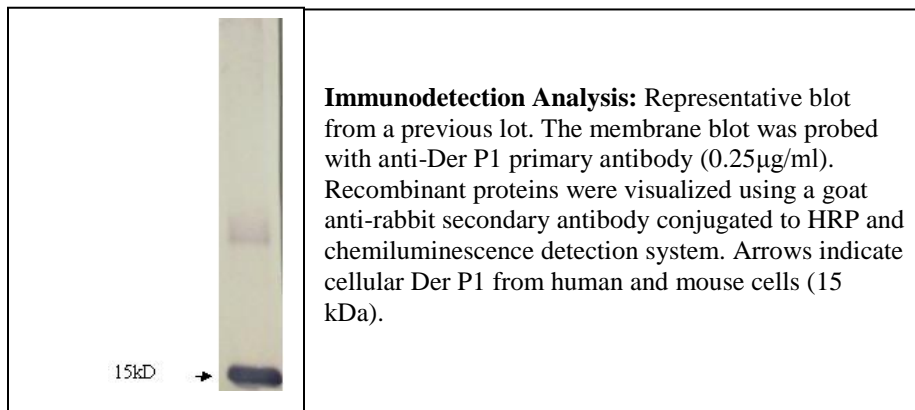
DERP1 is a thiol protease, with a preference for substrates with a large hydrophobic side chain in the P2 position, or with basic residues. DERP1 is a C1 peptidase family member. DERP1 has extensive endopeptidase specificity. DERP1 is N-glycosylated. N-glycanase treatment does not completely remove carbohydrates, suggesting that the protein contains additional glycosylation sites. DERP1 causes an allergic reaction in humans. Common symptoms of mite allergy are bronchial asthma, allergic rhinitis and conjunctivitis. DER P1 binds to IgE in 80% of patients with house dust allergy.

Applications

Table Summary of antibody applications and working conditions

Options Functions	YES	NO	Not determined	Recommended Work dilution or concentration
ELISA	*			1:20000 (at least detecting 50ng/ml)
Western Blotting	*			1:1000-5000(at least)
Enzyme Immunoassay(EIA)			*	

Note: Other applications are not tested yet. Optimal dilutions should be determined by each laboratory for each application.



**The products are furnished for LABORATORY RESEARCH USE ONLY.
Not for diagnostic or therapeutic use.**



RayBiotech, Inc.

3607 Parkway Lane suite 200
Norcross, GA 30092
Tel: 770-729-2992, 1-888-494-8555
Fax: 770-206-2393
Website: www.raybiotech.com
Email: info@raybiotech.com

Preparation

This antibody was produced from a rabbit immunized with the immunogen, expressed protein. The IgG fraction was purified from rabbit serum by ammonium sulphate precipitation followed by Protein A/G affinity chromatography.

Specificity

The rabbit anti-human Der P1 antibody detects specifically target derived from recombinant protein at various concentrations. Cross reactivity with mouse and rat are expected from sequence similarity.

Reconstitution

Supplied as lyophilized and purified antibody originally containing PBS, without preservative stabilizers, liking Sodium Azide. The final concentration is indicated on the shipping vial.

The antibody is stable for at least years from the data of receipt when stored at -20°C to -70°C . Reconstituted antibody (suggesting with sterile PBS) can also be aliquotted and stored frozen at -20°C to -70°C in a manual defrost freezer for months without detectable loss activity. Upon reconstitution, the antibody can also be stored over months at 4°C . **Please avoid freeze-thaw cycles.**

Storage

Store at -20°C , if not intended for use within a month, keep it at 4°C and **minimize freezing and thawing when use.**

Related products

1. Recombinant Der P1 Protein (Cat# 228-10319-3)

Reference

O'Brien R, Ooi MA, Clarke AH, Thomas WR. Immunologic responses following respiratory sensitization to house dust mite allergens in mice.(1996) Immunol Cell Biol.74(2):174-9.

Chen KW, Fuchs G, Sonneck K, Gieras A, Swoboda I, Douladiris N, Linhart B, Jankovic M, Pavkov T, Keller W, Papadopoulos NG, Valent P, Valenta R, Vrtala S. Reduction of the in vivo allergenicity of Der p 2, the major house-dust mite allergen, by genetic engineering.(2008) Mol Immunol. 45(9):2486-98.

**The products are furnished for LABORATORY RESEARCH USE ONLY.
Not for diagnostic or therapeutic use.**