



RayBiotech, Inc.

The protein array pioneer company

www.Raybiotech.com

3607 Parkway Lane, Suite 200,
Norcross, GA 30092

Tel: 770-729-2992, 1-888-494-8555

Fax: 770-206-2393

E-mail: info@raybiotech.com

Certificate of Analysis and Data Sheet

Recombinant Human Kallikrein-6 (KLK6)

[Product Catalog # 230-00215](#)

Synonyms

Kallikrein-6 (KLK6), SP59, hK6, neurosin.

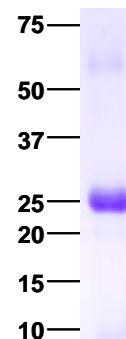
Source

- *Escherichia coli* derived.
- Protein Accession #. AAH15525.1, Glu17-Lys244.
- Containing an *N*-terminal 6× histidine tag

Predicted Molecular Mass

~ 27 kDa.

kDa



Purity

>95%, determined by SDS-PAGE under reducing conditions and visualized by Coomassie blue staining (*see the image above*).

Formulation

Recombinant KLK6 protein is lyophilized from a 0.2 µm filtered 0.1 M NaHCO₃ and 0.5 M NaCl (pH 8.3) solution. Protein concentration prior to lyophilization was 1.42 mg/mL.

Reconstitution

Briefly spin the vial and bring the contents to the bottom prior to opening. It is recommended to reconstitute at 1.5 mg/mL with sterile deionized water.

Stability & Storage

- Upon arrival, the lyophilized products may be stored for 2 weeks at 2 to 8 °C. For long term storage, it is recommended to be stored desiccated below -20 °C in a manual defrost freezer.
- Following reconstitution, the protein may be stored for 2 weeks at 2 to 8 °C. For long term storage, it is recommended to add a carrier protein (0.1% HSA or BSA) and store at -20 °C or -80 °C in aliquots. **Avoid repeated freeze-thaw cycles.**

**The products are furnished for LABORATORY RESEARCH USE ONLY.
Not for therapeutic use.**