



RayBiotech, Inc.

The protein array pioneer company

www.Raybiotech.com

3607 Parkway Lane, Suite 200,
Norcross, GA 30092

Tel: 770-729-2992, 1-888-494-8555

Fax: 770-206-2393

E-mail: info@raybiotech.com

Certificate of Analysis and Data Sheet

Recombinant Human Golgi Membrane Protein 1 (GP73)

[Product Catalog # 230-00218](#)

Synonyms

Golgi protein, 73-kD, GOLPH2.

Source

- *Escherichia coli* derived.
- Protein Accession #: Q8NBJ4, Ser36-Leu401.
- Containing an *N*-terminal 6× histidine tag

Predicted Molecular Mass

~ 44.5 kDa (the actual size is ~48 kDa, slight larger than the predicted)

Purity

>95%, determined by SDS-PAGE under reducing conditions and visualized by Commassie blue staining (See the image above).

Formulation

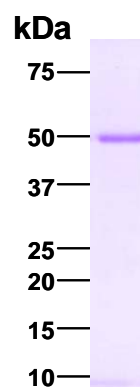
Lyophilized from a 0.2 µm filtered solution in PBS (pH 7.4). Protein concentration prior to lyophilization was 380 µg/mL.

Reconstitution

Briefly spin the vial prior to opening and bring the contents to the bottom. It is recommended to reconstitute the lyophilized product with sterile H₂O.

Stability & Storage

- Upon arrival, the lyophilized products may be stored for 2 weeks at 2 to 8 °C. For long term storage, it is recommended to be stored desiccated below -20 °C in a manual defrost freezer.
- Following reconstitution, the protein may be stored for 2 weeks at 2 to 8 °C. For long term storage, it is recommended to add a carrier protein (0.1% HSA or BSA) and store at -20 °C or -80 °C in aliquots. **Avoid repeated freeze-thaw cycles.**



**The products are furnished for LABORATORY RESEARCH USE ONLY.
Not for therapeutic use.**