



**RayBiotech, Inc.**

The protein array pioneer company

[www.Raybiotech.com](http://www.Raybiotech.com)

3607 Parkway Lane, Suite 200,  
Norcross, GA 30092

Tel: 770-729-2992, 1-888-494-8555

Fax: 770-206-2393

E-mail: [info@raybiotech.com](mailto:info@raybiotech.com)

---

## Certificate of Analysis and Data Sheet

### Recombinant Human CD23, Fcε RII

[Product Catalog # 230-00226](#)

#### **Synonyms**

CD23 antigen, Fc-epsilon-RII.

#### **Source**

- *Escherichia coli* derived.
- Protein Accession #: AAH14108, Met79-Ser321.
- Containing an N-terminal 6× histidine tag

#### **Predicted Molecular Mass**

~27 kDa.

#### **Purity**

>95%, determined by SDS-PAGE under reducing conditions and visualized by Coomassie blue staining (see the image above).

#### **Formulation**

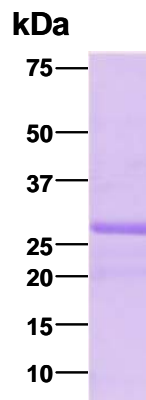
Liquid, clear solution. Supplied as a 0.2 µm filtered solution in PBS (pH 7.4).

#### **Concentration**

Lot specific (see the label on the vial).

#### **Stability & Storage**

Upon arrival, the protein may be stored for two weeks at 2 to 8 °C. For long term storage, it is recommended to add a carrier protein (0.1% HSA or BSA) and store at -20 °C or -80 °C in aliquots. **Avoid repeated freeze-thaw cycles.**



---

**The products are furnished for LABORATORY RESEARCH USE ONLY.  
Not for therapeutic use.**