

## BriteRuler™ Pre-stained Protein Ladder

<b>CATALOG #:</b>	9306-100
<b>SIZE:</b>	~100 applications (2-5 µl per lane)
<b>VOLUME:</b>	250 µl
<b>FORMULATION:</b>	0.2-0.4 mg/ml of each protein in 20 mM Tris-phosphate, pH 7.5, 2% SDS, 1 mM 2-mercaptoethanol, 3.6 M urea and 15% glycerol.
<b>STORAGE:</b>	Store at 25°C for 2 weeks; at 4°C for 3 months; -20°C for 24 months.
<b>QUALITY CONTROL:</b>	Tested in SDS-PAGE and Western Blotting

### DESCRIPTION:

BioVision's BriteRuler™ Pre-stained Protein Ladder is a ready-to-use formulation which does not require boiling, contains 10 pre-stained proteins covering a wide range of molecular weights (10-180 kDa) and includes a red reference band at 75 kDa and a green reference band at 25 kDa. The protein ladder is designed for monitoring protein separation during SDS-PAGE, verification of Western blot transfer (PVDF, nylon or nitrocellulose membranes) and for the approximate sizing of proteins. Supplied as a ready-to use formulation in gel loading buffer, the ladder requires no heating, dilution or addition of reducing agents.

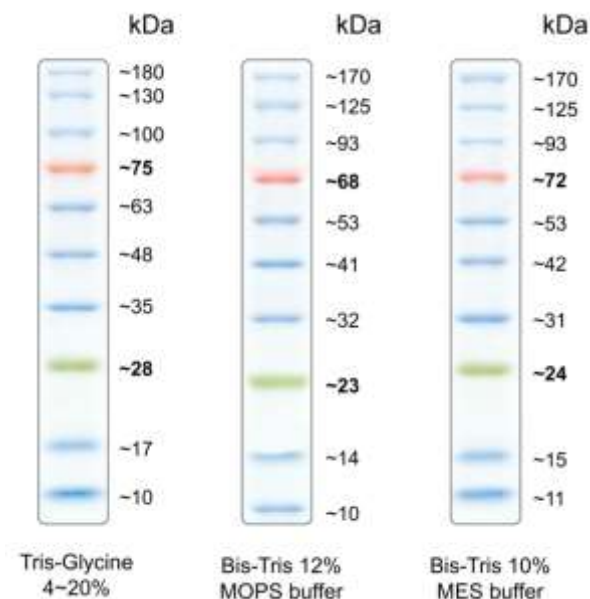
### FEATURES & RECOMMENDED USAGE:

- Sharp and stable bands
- Two reference bands (red at 75 kDa; green at 25 kDa)
- Ready-to use (no boiling, dilution or addition of reducing agents)
- Western Blot: 2-3 µl/Lane
- SDS-PAGE:
  - 3 µl/Lane (15-Lane mini-gel)
  - 5 µl/Lane (10-Lane mini-gel)

**FOR RESEARCH USE ONLY! Not to be used on humans.**

### Migration patterns of BriteRuler™ Pre-stained Protein Ladder

(The apparent molecular weight of each protein (kDa) has been determined by calibration against an unstained protein ladder in each electrophoresis)



### RELATED PRODUCTS:

#### Protein Extraction & Purification

- Antibiotics
- Cell Fractionation & Protein Extraction Kits
- Cell Lysis Agents
- Detergents
- Phosphatase Inhibitor Cocktails
- Protease Inhibitor Cocktails
- Tag Antibodies

#### Antibodies and Supporting Tools

- Primary Antibodies /Secondary Antibodies/Blocking Peptides
- Fluorescent Protein Antibodies & Set
- Loading Control Antibodies/Marker Antibodies
- Phospho-Specific Antibodies
- Protein A/G/L & Affinity Conjugates
- Western Blot Control Lysates
- Western Blot Substrate Kit