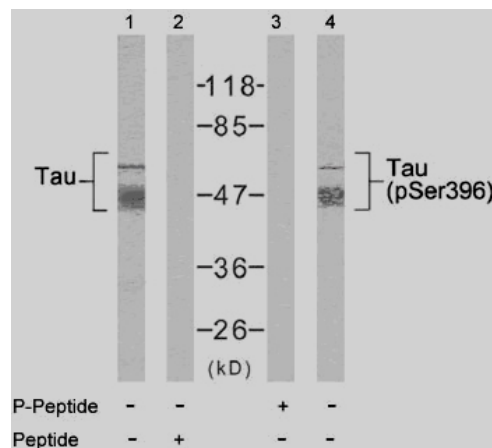


## Rabbit anti Tau (Ab-396)

- Catalog Number:** AP21093  
**Amount:** 100µl (for 10 Western Blotting)  
**Form of Antibody:** Rabbit IgG in phosphate buffered saline (without Mg<sup>2+</sup> and Ca<sup>2+</sup>), pH 7.4, 150mM NaCl, 0.02% sodium azide and 50% glycerol.  
**Storage/Stability:** Store at -20°C/1 year  
**Immunogen:** The antiserum was produced against synthesized non-phosphopeptide derived from human Tau around the phosphorylation site of serine 396 (Y-K-S<sup>P</sup>-P-V).  
**Purification:** The antibody was affinity-purified from rabbit antiserum by affinity-chromatography using epitope-specific immunogen.  
**Specificity/Sensitivity:** Tau (Ab-396) antibody detects endogenous levels of total Tau protein.  
**Reactivity:** Human, Mouse, Rat  
**Applications:** WB: 1:1000  
**Swiss-Prot No. :** P10636  
**References:** Puig B, et al. (2005) Acta Neuropathol (Berl). 110(3):261-268.  
DeGiorgis JA, et al. (2005) J Proteome Res. 4(2): 306-315.  
Alonso Adel C, et al. (2004) J Biol Chem. 279(33): 34873-34881.



Western blot analysis of extract from mouse brain tissue using Tau (Ab-396) antibody (AP21093, Lane 1 and 2) and Tau (phospho- Ser396) antibody (pAP11102, Lane 3 and 4).

**For Research Use Only**

Contact & Ordering Information: Angio-Proteomie, 11 Park Drive, Suite 12, Boston, MA 02215, USA. Fax: (480) 247-4337, [angioproteomie@gmail.com](mailto:angioproteomie@gmail.com)