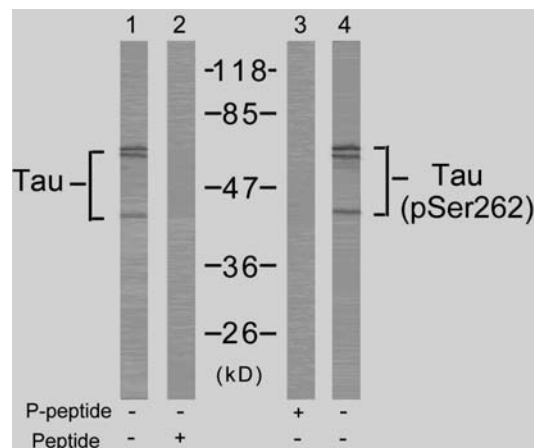


Rabbit anti Tau (Ab-262)

- Catalog Number:** AP21100
Amount: 100µl (for 10 Western Blotting)
Form of Antibody: Rabbit IgG in phosphate buffered saline (without Mg²⁺ and Ca²⁺), pH 7.4, 150mM NaCl, 0.02% sodium azide and 50% glycerol.
Storage/Stability: Store at -20°C/1 year
Immunogen: The antiserum was produced against synthesized non-phosphopeptide derived from human Tau around the phosphorylation site of serine 262 (I-G-S^P-T-E).
Purification: The antibody was affinity-purified from rabbit antiserum by affinity-chromatography using epitope-specific immunogen.
Specificity/Sensitivity: Tau (Ab-262) antibody detects endogenous levels of Tau protein around serine 262.
Reactivity: Human, Mouse, Rat
Applications: WB: 1:1000
Swiss-Prot No. : P10636
References: Timm T, et al. (2003) EMBO J; 22(19): 5090-5101.



Western blot analysis of extracts from mouse brain tissue using Tau (Ab-262) antibody (AP21100, Lane 1 and 2) and Tau (phospho-Ser262) antibody (pAP11111, Lane 3 and 4).

For Research Use Only

Contact & Ordering Information: Angio-Proteomie, 11 Park Drive, Suite 12, Boston, MA 02215, USA. Fax: (480) 247-4337, angioproteomie@gmail.com