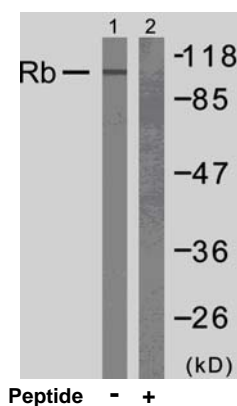




11 Park Drive, Suite 12  
Boston, MA 02215

## Rabbit anti Rb (Ab-807)

- Catalog Number:** AP21109  
**Amount:** 100µl (For 10 Western Blotting)  
**Form of Antibody:** Rabbit IgG in phosphate buffered saline (without Mg<sup>2+</sup> and Ca<sup>2+</sup>), pH 7.4, 150mM NaCl, 0.02% sodium azide and 50% glycerol.  
**Storage/Stability:** Store at -20°C/1 year  
**Immunogen:** The antiserum was produced against synthesized non-phosphopeptide derived from human Rb around the phosphorylation site of serine 807 (Y-I-S<sup>P</sup>-P-L).  
**Purification:** The antibody was affinity-purified from rabbit antiserum by affinity-chromatography using epitope-specific immunogen.  
**Specificity/Sensitivity:** Rb (Ab-807) antibody detects endogenous levels of total Rb protein.  
**Reactivity:** Human, Mouse, Rat  
**Applications:** WB: 1:1000  
**Swiss-Prot No. :** P06400  
**References:** Roesch A, et al. (2005) Mod Pathol. 18(4): 565-572.  
Chadee DN, et al. (2004) Nat Cell Biol. 6(8): 770-776.  
Knudsen ES, et al. (1997) Mol Cell Biol. 17(10): 5771-5783.  
Knudsen ES, et al. (1996) J Biol Chem. 271(14): 8313-8320.



Western blot analysis of extracts from MOLT cells using Rb (Ab-807) antibody (AP21109).

**For Research Use Only**

Contact & Ordering Information: Angio-Proteomie, 11 Park Drive, Suite 12, Boston, MA 02215, USA. Fax: (480) 247-4337, [angioproteomie@gmail.com](mailto:angioproteomie@gmail.com)