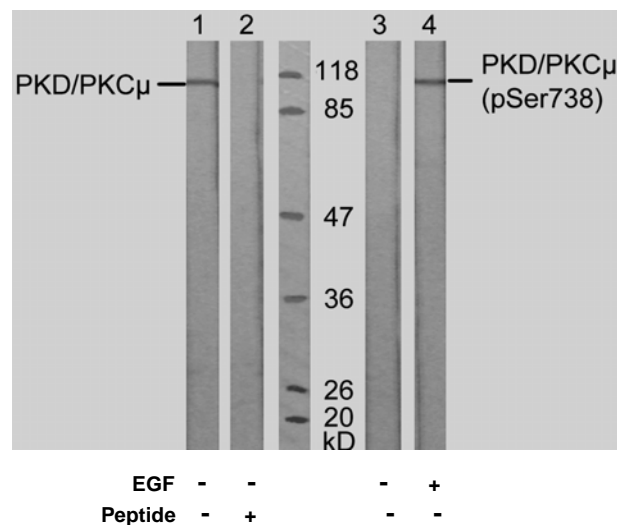


Rabbit anti PKD/PKC μ (Ab-738)

- Catalog Number:** AP21126
Amount: 100 μ l (for 10 Western Blotting)
Swiss-Prot No. : Q15139
Form of Antibody: Rabbit IgG in phosphate buffered saline (without Mg²⁺ and Ca²⁺), pH 7.4, 150mM NaCl, 0.02% sodium azide and 50% glycerol.
Storage/Stability: Store at -20°C/1 year
Immunogen: The antiserum was produced against synthesized non-phosphopeptide derived from human PKD/PKC μ around the phosphorylation site of serine 738 (E-K-S^P-F-R).
Purification: The antibody was affinity-purified from rabbit antiserum by affinity-chromatography using epitope-specific immunogen.
Specificity/Sensitivity: PKD/PKC μ (Ab-738) antibody detects endogenous levels of total PKD/PKC μ protein.
Reactivity: Human, Mouse, Rat
Applications: WB: 1:1000
References: Storz P, et al. Mol Cell Biol. 2004 Apr; 24(7): 2614-2626.
 Storz P, et al. Mol Cell Biol. 2005 Oct; 25(19): 8520-8530.
 Zhang W, et al. J Biol Chem 2005 May 13; 280(19): 19036-19044



Western blot analysis of extract from A431 cells, untreated or treated with EGF (200ng/ml, 10min), using PKD/PKC μ (Ab-738) antibody (AP21126, Lane 1 and 2) and PKD/PKC μ (phospho-Ser738) antibody (pAP11078, Lane 3 and 4).

For Research Use Only

Contact & Ordering Information: Angio-Proteomie, 11 Park Drive, Suite 12, Boston, MA 02215, USA. Fax: (480) 247-4337, angioproteomie@gmail.com