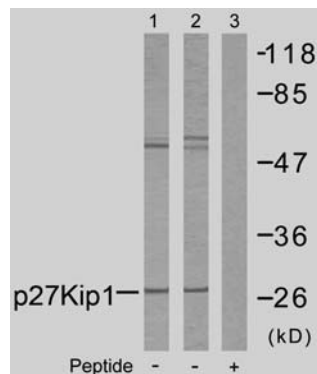




11 Park Drive, Suite 12
Boston, MA 02215

Rabbit anti p27Kip1 (Ab-10)

- Catalog Number:** AP21150
Amount: 100µl (For 10 Western Blotting)
Form of Antibody: Rabbit IgG in phosphate buffered saline (without Mg²⁺ and Ca²⁺), pH 7.4, 150mM NaCl, 0.02% sodium azide and 50% glycerol.
Storage/Stability: Store at -20°C/1 year
Immunogen: The antiserum was produced against synthesized non-phosphopeptide derived from human p27Kip1 around the phosphorylation site of serine 10 (N-G-S^P-P-S).
Purification: The antibody was affinity-purified from rabbit antiserum by affinity-chromatography using epitope-specific immunogen.
Specificity/Sensitivity: p27Kip1 (Ab-10) antibody detects endogenous levels of total p27Kip1 protein.
Reactivity: Human, Mouse, Rat
Applications: WB: 1:1000
Swiss-Prot No. : P46527
References: Le XF, et al. (2003)J Biol Chem.
Connor MK, et al. (2003)Mol Biol Cell; 14(1): 201-13.
McAllister SS, et al. (2003) Mol Cell Biol; 23(1): 216-28.
Chopra S, et al. (2002)J Biol Chem; 277(36): 32413-6.
Boehm M, et al. (2002)EMBO J; 21(13): 3390-401.



Western blot analysis using p27Kip1 (Ab-10) antibody (E021150): Lane1: The extract from A2780 cells; Lane2: The extract from COLO205 cells; Lane3: The extract from COLO205 cells using AP21150 preincubated with synthesized peptide.

For Research Use Only

Contact & Ordering Information: Angio-Proteomie, 11 Park Drive, Suite 12, Boston, MA 02215, USA. Fax: (480) 247-4337, angioproteomie@gmail.com