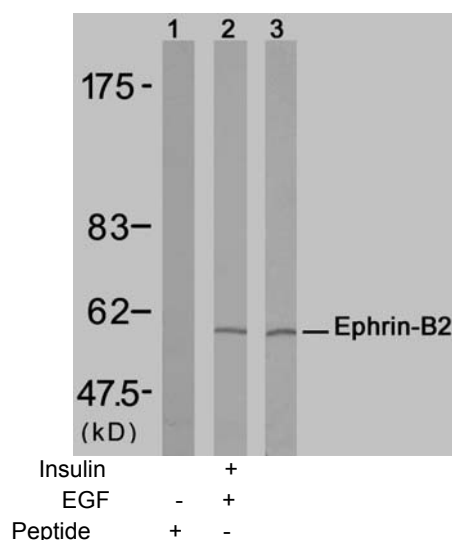


Rabbit anti Ephrin-B2 (Ab-316)

- Catalog Number:** AP21195
- Amount:** 100µl (For 10 Western Blotting)
- Swiss-Prot No. :** P52799
- Form of Antibody:** Rabbit IgG in phosphate buffered saline (without Mg^{2+} and Ca^{2+}), pH 7.4, 150mM NaCl, 0.02% sodium azide and 50% glycerol.
- Storage/Stability:** Store at -20°C/1 year
- Immunogen:** The antiserum was produced against synthesized non-phosphopeptide derived from human Ephrin-B2 around the phosphorylation site of tyrosine 316 (P-V-Y^P-I-V).
- Purification:** The antibody was affinity-purified from rabbit antiserum by affinity-chromatography using epitope-specific immunogen.
- Specificity/Sensitivity:** Ephrin-B2 (Ab-316) antibody detects endogenous levels of total Ephrin-B2 protein.
- Reactivity:** Human, Mouse, Rat
- Applications:** WB: 1:1000
- References:** Chrencik JE, et al.(2006) J Biol Chem;281(38):28185-28192.
Kertesz N, et al.(2006) Blood;107(6):2330-2338.
Noren NK, et al.(2004) Proc Natl Acad Sci USA;101(15):5583-5588.



Western blot analysis of extract from HUVEC cells, untreated or treated with Insulin or EGF, using Ephrin-B2 (Ab-316) antibody (AP21195).

For Research Use Only

Contact & Ordering Information: Angio-Proteomie, 11 Park Drive, Suite 12, Boston, MA 02215, USA. Fax: (480) 247-4337, angioproteomie@gmail.com