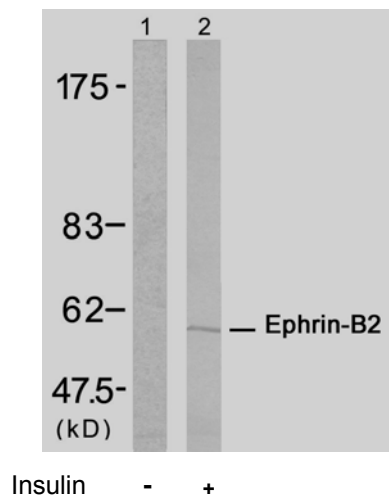


## Rabbit anti Ephrin-B2 (Ab-330)

- Catalog Number:** AP21196  
**Amount:** 100µl (For 10 Western Blotting)  
**Swiss-Prot No. :** P52799  
**Form of Antibody:** Rabbit IgG in phosphate buffered saline (without Mg<sup>2+</sup> and Ca<sup>2+</sup>), pH 7.4, 150mM NaCl, 0.02% sodium azide and 50% glycerol.  
**Storage/Stability:** Store at -20°C/1 year  
**Immunogen:** The antiserum was produced against synthesized non-phosphopeptide derived from human Ephrin-B2 around the phosphorylation site of tyrosine 330 (N-I-Y<sup>P</sup>-Y-K).  
**Purification:** The antibody was affinity-purified from rabbit antiserum by affinity-chromatography using epitope-specific immunogen.  
**Specificity/Sensitivity:** Ephrin-B2 (Ab-330) antibody detects endogenous levels of total Ephrin-B2 protein.  
**Reactivity:** Human, Mouse, Rat  
**Applications:** WB: 1:1000  
**References:** Chrencik JE, et al. (2006) J Biol Chem;281(38):28185-28192.  
Kertesz N, et al. (2006) Blood; 107(6):2330-2338.  
Noren NK, et al. (2004) Proc Natl Acad Sci USA; 101(15):5583-5588.



Western blot analysis of extract from A431 cells untreated or treated with Insulin, using Ephrin-B2 (Ab-330) antibody (AP21196).

**For Research Use Only**

Contact & Ordering Information: Angio-Proteomie, 11 Park Drive, Suite 12, Boston, MA 02215, USA. Fax: (480) 247-4337, [angioproteomie@gmail.com](mailto:angioproteomie@gmail.com)