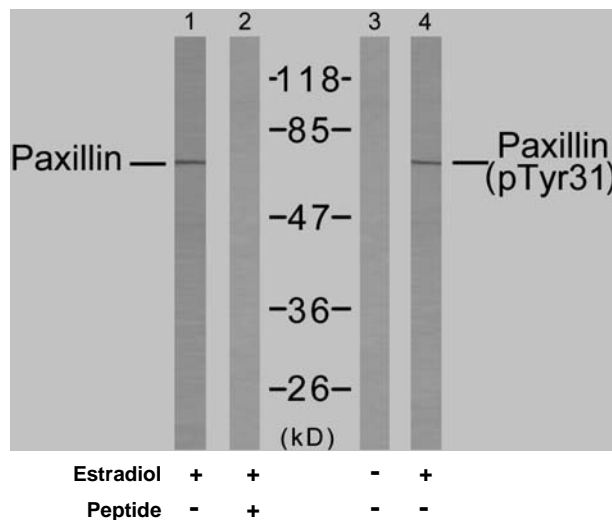




11 Park Drive, Suite 12
Boston, MA 02215

Rabbit anti Paxillin (Ab-31)

- Catalog Number:** AP21199
Amount: 100µl (for 10 Western Blotting)
Swiss-Prot No. : P49023
All Names: PAX-1, PXN, Paired box protein Pax-1, paxillin, paxillin alpha
All Sites: Human: Tyr31
Form of Antibody: Rabbit IgG in phosphate buffered saline (without Mg²⁺ and Ca²⁺), pH 7.4, 150mM NaCl, 0.02% sodium azide and 50% glycerol.
Storage/Stability: Store at -20°C/1 year
Immunogen: The antiserum was produced against synthesized non-phosphopeptide derived from human Paxillin around the phosphorylation site of tyrosine 31 (T-P-Y^P-S-Y).
Purification: The antibody was affinity-purified from rabbit antiserum by affinity-chromatography using epitope-specific immunogen.
Specificity/Sensitivity: Paxillin (Ab-31) antibody detects endogenous levels of total Paxillin protein.
Reactivity: Human
Applications: WB: 1:1000
References: Davidson D, et al. (2001) EMBO J; 20(13): 3414-3426
Kook S, et al. (2000) Mol Biol Cell; 11(3): 929-939
Fleming I, et al. (1999) Proc Natl Acad Sci U S A; 96(3): 1123-1128
Goldberg MB, et al. (2001) Microbiol Mol Biol Rev; 65(4): 595-626
Thomas JT, et al. (1999) Proc Natl Acad Sci U S A; 96(15): 8449-8454



Western blot analysis of extracts from SK-OV3 cells untreated or estradiol-treated (0.1µM, 20min), using Paxillin (Ab-31) antibody (AP21199, Lane 1 and 2) and Paxillin (phospho-Tyr31) antibody (pAP11201, Lane 3 and 4).

For Research Use Only

Contact & Ordering Information: Angio-Proteomie, 11 Park Drive, Suite 12, Boston, MA 02215, USA. Fax: (480) 247-4337, angioproteomie@gmail.com