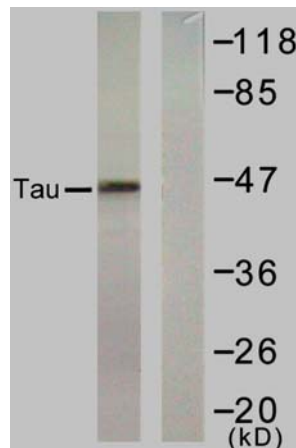




11 Park Drive, Suite 12
Boston, MA 02215

Rabbit anti Tau (Ab-422)

- Catalog Number:** AP21262
Amount: 100µl (For 10 Western Blotting)
Form of Antibody: Rabbit IgG in phosphate buffered saline (without Mg²⁺ and Ca²⁺), pH 7.4, 150mM NaCl, 0.02% sodium azide and 50% glycerol.
Storage/Stability: Store at -20°C/1 year
Immunogen: The antiserum was produced against synthesized non-phosphopeptide derived from human Tau around the phosphorylation site of serine 422 (V-D-S^P-P-Q).
Purification: The antibody was affinity-purified from rabbit antiserum by affinity-chromatography using epitope-specific immunogen.
Specificity/Sensitivity: Tau (Ab-422) antibody detects endogenous levels of total Tau protein.
Reactivity: Human, Mouse, Rat
Applications: WB: 1:1000
Swiss-Prot No. : P10636
References: Gong CX, et al. (2006) J Biomed Biotechnol. 2006: 31825
Gamblin TC, et al. (2003) Proc Natl Acad Sci U S A. 2003 Aug 19; 100(17): 10032-10037
Xu X., et al. (1997) Proc Natl Acad Sci U S A. Nov 11; 94(23): 12655-12660



Western blot analysis of extract from rat hippocampus tissue, using Tau (Ab-422) antibody (AP21262).

For Research Use Only

Contact & Ordering Information: Angio-Proteomie, 11 Park Drive, Suite 12, Boston, MA 02215, USA. Fax: (480) 247-4337, angioproteomie@gmail.com