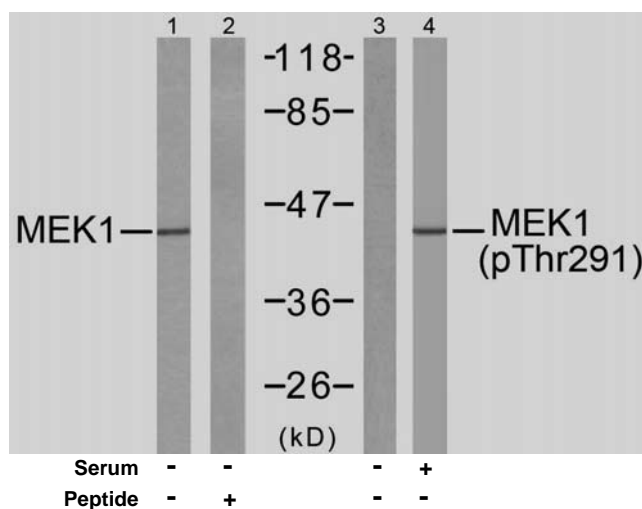


## Rabbit anti MEK1 (Ab-291)

- Catalog Number:** AP21286  
**Amount:** 100µl (for 10 Western Blotting)  
**Swiss-Prot No. :** Q02750  
**Form of Antibody:** Rabbit IgG in phosphate buffered saline (without Mg<sup>2+</sup> and Ca<sup>2+</sup>), pH 7.4, 150mM NaCl, 0.02% sodium azide and 50% glycerol.  
**Storage/Stability:** Store at -20°C/1 year  
**Immunogen:** The antiserum was produced against synthesized non-phosphopeptide derived from human MEK1 around the phosphorylation site of threonine 291 (P-R-T<sup>P</sup>-P-G).  
**Purification:** The antibody was affinity-purified from rabbit antiserum by affinity-chromatography using epitope-specific immunogen.  
**Specificity/Sensitivity:** MEK1 (Ab-291) antibody detects endogenous levels of total MEK1 protein.  
**Reactivity:** Human, Mouse, Rat  
**Applications:** WB: 1:1000  
**References:** Kevin D. Burroughs, et.al. (2003) Mol. Cancer Res ; 1: 312.  
Michael J. Piatelli, et.al. (2002) J. Biol. Chem ; 277: 12144 - 12150.  
Margaret M. Morgan, et.al. (2001) J. Immunol ; 167: 5708.  
Herbert Schramek, et.al. (2003) Am J Physiol Cell Physiol, ; 285: C652 - C661.



Western blot analysis of extracts from 293 cells untreated or treated with 10% serum, using MEK1 (Ab-291) antibody (AP21286, Line 1 and 2) and MEK1 (phospho-Thr291) antibody (pAP11294, Line 3 and 4).

**For Research Use Only**

Contact & Ordering Information: Angio-Proteomie, 11 Park Drive, Suite 12, Boston, MA 02215, USA. Fax: (480) 247-4337, [angioproteomie@gmail.com](mailto:angioproteomie@gmail.com)