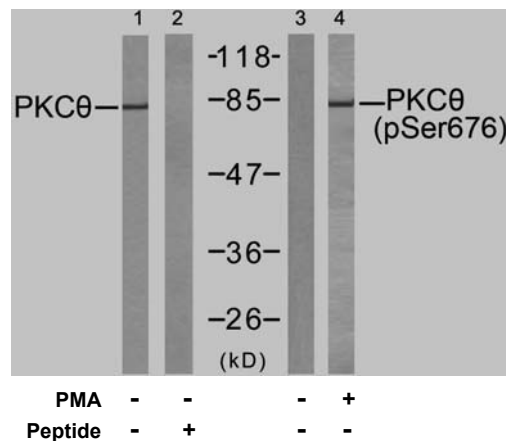




11 Park Drive, Suite 12  
Boston, MA 02215

## Rabbit anti PKC $\theta$ (Ab-676)

- Catalog Number:** AP21289  
**Amount:** 100 $\mu$ l (For 10 Western Blotting)  
**Swiss-Prot No. :** Q04759  
**All Names:** PRKCQ , Protein kinase C theta type  
**Form of Antibody:** Rabbit IgG in phosphate buffered saline (without Mg<sup>2+</sup> and Ca<sup>2+</sup>), pH 7.4, 150mM NaCl, 0.02% sodium azide and 50% glycerol.  
**Storage/Stability:** Store at -20°C/1 year  
**Immunogen:** The antiserum was produced against synthesized non-phosphopeptide derived from human PKC $\theta$  around the phosphorylation site of serine 676 (R-L-S<sup>P</sup>-F-A).  
**Purification:** The antibody was affinity-purified from rabbit antiserum by affinity-chromatography using epitope-specific immunogen.  
**Specificity/Sensitivity:** PKC $\theta$  (Ab-676) antibody detects endogenous levels of total PKC $\theta$  protein.  
**Reactivity:** Human, Mouse, Rat  
**Applications:** WB: 1:1000  
**References:** Kristof Van Kolen, et al. (2006) FEBS J ; 273: 1843 - 1854.  
Martin Villalba, et al. (2002) J. Cell Biol ; 157: 253.  
Jie Zhang, et al. (2004) J. Biol. Chem ; 279: 22118 - 22123.  
Castro AF, et al. (1998) Am J Physiol Cell Physiol; 275: C113 - C119.



Western blot analysis of extracts from Jurkat cells untreated or treated with PMA (1ng/ml, 5min), using PKC $\theta$  (Ab-676) antibody (AP21289, Line 1 and 2) and PKC $\theta$  (phospho-Ser676) antibody (pAP11297, Line 3 and 4).

**For Research Use Only**

Contact & Ordering Information: Angio-Proteomie, 11 Park Drive, Suite 12, Boston, MA 02215, USA. Fax: (480) 247-4337, [angioproteomie@gmail.com](mailto:angioproteomie@gmail.com)