



## RayBiotech, Inc.

3607 Parkway Lane suite 200  
Norcross, GA 30092  
Tel: 770-729-2992, 1-888-494-8555  
Fax: 770-206-2393  
Website: [www.raybiotech.com](http://www.raybiotech.com)  
Email: [info@raybiotech.com](mailto:info@raybiotech.com)

### Certificate of Analysis and Data Sheet

## Mouse anti Human CD45RO

### With HRP-conjugated Secondary Antibody

**Catalog No.**  
DS-MB-00713

**Target Species**  
Human

**Isotype**  
IgG2a

### **Preparation**

**Preparation:** Purified IgG prepared by affinity chromatography on Protein G from tissue culture supernatant

**Immunogen:** Human IL-2 dependent T cells

**Fusion Partners:** Spleen cells from immunized mice were fused with cells of the mouse P3/NS1/1-Ag4-1 myeloma cell line.

### **Specificity**

DS-MB-00713 recognizes the low molecular weight isoform (180kD) of the leukocyte common antigen (LCA). The antigen is expressed by a functional subset of T cells with memory phenotype. In peripheral blood stains 40-80% of lymphocytes, and all monocytes and granulocytes.

### **Formulation**

**Product Type:** Monoclonal Antibody

**Product Form:** Purified IgG - liquid

**Approx. Protein Concentrations:** IgG concentration 1.0 mg/ml

**Preservative Stabilizers:** 0.09% Sodium Azide

### **Storage**

Store at +4°C or at -20°C if preferred.

This product should be stored undiluted.

Storage in frost free freezers is not recommended. Avoid repeated freezing and thawing as this may denature the antibody. Should this product contain a precipitate we recommend microcentrifugation before use.

**Shelf Life:** 18 months from shipment

**The products are furnished for LABORATORY RESEARCH USE ONLY.**  
**Not for diagnostic or therapeutic use.**



## RayBiotech, Inc.

3607 Parkway Lane suite 200  
Norcross, GA 30092  
Tel: 770-729-2992, 1-888-494-8555  
Fax: 770-206-2393  
Website: [www.raybiotech.com](http://www.raybiotech.com)  
Email: [info@raybiotech.com](mailto:info@raybiotech.com)

### Applications

**Table Summary of antibody applications and working conditions**

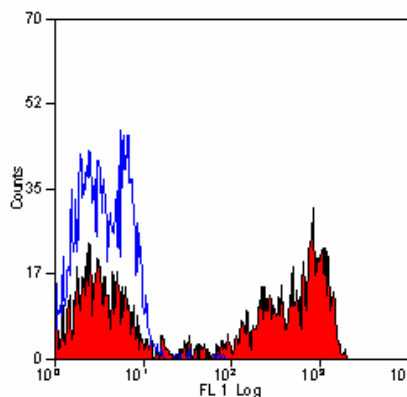
Options Functions	YES	NO	Not determined	Recommended Work dilution or concentration
ELISA			▪	
Western Blotting			▪	
Immunohistology - frozen	▪			
Immunohistology - paraffin	▪			
Immunohistology - resin			▪	
Immunoprecipitation	▪			
Flow Cytometry	▪			1:25 – 1:50

*Note: Other applications are not tested yet. Optimal dilutions should be determined by each laboratory for each application.*

### Secondary Antibody Applications

Options Functions	YES	NO	Not determined	Recommended Work dilution or concentration
Immunoassay (ELISA, Western Blotting)	•			1:5000-1:10000

### Image



Staining of human peripheral blood lymphocytes with MOUSE ANTI HUMAN CD45RO (DS-MB-0713)

**The products are furnished for LABORATORY RESEARCH USE ONLY.  
Not for diagnostic or therapeutic use.**