



RayBiotech, Inc.

3607 Parkway Lane suite 200
Norcross, GA 30092
Tel: 770-729-2992, 1-888-494-8555
Fax: 770-206-2393
Website: www.raybiotech.com
Email: info@raybiotech.com

Certificate of Analysis and Data Sheet

Mouse Anti Huntingtin

With HRP-conjugated Secondary Antibody

Catalog No.

DS-MB-01574

Target Species

Human

Isotype

IgG1

Synonyms

IT15

Preparation

Purification: Purified IgG prepared by affinity chromatography on Protein G.

Immunogen: Recombinant protein corresponding to amino acids 2703 - 2911 of huntingtin.

Formulation

Product Type: Monoclonal Antibody

Product Form: Purified IgG - liquid

Buffer: Phosphate buffered saline

Preservative Stabilizers: 0.09% Sodium Azide

Approx. Protein Concentration: IgG concentration 1.0 mg/ml

Specificity

DS-MB-01574 reacts with an epitope corresponding to the HDC region (2703 - 2911 amino acids) of the huntingtin protein.

This antibody detects a 350KD band on western blots but also detects smaller degradation products of huntingtin. DS-MB-01574 recognizes both denatured and native huntingtin in human brain.

Species Crossreactivity: Reacts with: Mouse, Rabbit and Human

Storage

Store at +4°C or at -20°C if preferred. This product should be stored undiluted. Storage in frost free freezers is not recommended. Avoid repeated freezing and thawing as this may denature the antibody. Should this product contain a precipitate we recommend microcentrifugation before use.

Shelf Life: 18 months from date of shipment

**The products are furnished for LABORATORY RESEARCH USE ONLY.
Not for diagnostic or therapeutic use.**



RayBiotech, Inc.

3607 Parkway Lane suite 200
Norcross, GA 30092
Tel: 770-729-2992, 1-888-494-8555
Fax: 770-206-2393
Website: www.raybiotech.com
Email: info@raybiotech.com

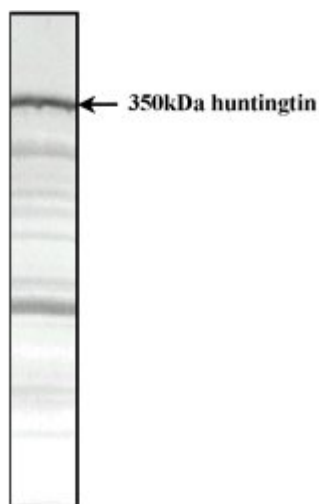
Applications

Table Summary of antibody applications and working conditions

Options Functions	YES	NO	Not determined	Recommended Work dilution or concentration
ELISA			•	
Western Blotting	•			
IHC – Paraffin			•	
IHC – Frozen	•			
Immunoprecipitation	•			

Note: Other applications are not tested yet. Optimal dilutions should be determined by each laboratory for each application.
1) Increased cytoplasmic staining, relative to nuclear, has been reported using formaldehyde as a fixative compared with acetone/methanol

Image



Total protein extract of normal human cerebral cortex separated as a strip on a 3-12.5% gradient SDS-PAGE gel and Western blotted. The blot was probed with DS-MB-01574

References

1. Wilkinson, F. L. *et al.* (1999) Localization of rabbit huntingtin using a new panel of monoclonal antibodies. *Molecular Brain Research*. 69: 10-20.

**The products are furnished for LABORATORY RESEARCH USE ONLY.
Not for diagnostic or therapeutic use.**