



RayBiotech, Inc.

3607 Parkway Lane suite 200
Norcross, GA 30092
Tel: 770-729-2992, 1-888-494-8555
Fax: 770-206-2393
Website: www.raybiotech.com
Email: info@raybiotech.com

Certificate of Analysis and Data Sheet

Rat Anti Human Interleukin-10:Azide Free

With HRP-conjugated Secondary Antibody

Catalog No.
DS-MB-01620

Target Species
Human

Isotype
IgG2a

Preparation

Immunogen: Human IL-10 expressed by COS cells

Purification: Purified IgG prepared by affinity chromatography on Protein G from tissue culture supernatant

Formulation

Product Type: Monoclonal Antibody

Product Form: Purified IgG - liquid

Buffer: Phosphate buffered saline

Preservative Stabilizers: None present

Approx. Protein Concentration: IgG concentration 1.0 mg/ml

Specificity

DS-MB-01620 is specific for human Interleukin-10 (IL-10). IL-10 is expressed by activated CD8+ peripheral blood T-cells, activated T-helper CD4+ T cell clones, B cell lymphomas and LPS activated monocytes.

DS-MB-01620 is reported to neutralize the effects of IL-10(4).

Storage

Store at -20°C only. This product should be stored undiluted.

Storage in frost-free freezers is not recommended. Avoid repeated freezing and thawing as this may denature the antibody. Should this product contain a precipitate we recommend microcentrifugation before use.

Shelf Life: 18 months from date of shipment

**The products are furnished for LABORATORY RESEARCH USE ONLY.
Not for diagnostic or therapeutic use.**



RayBiotech, Inc.

3607 Parkway Lane suite 200
Norcross, GA 30092
Tel: 770-729-2992, 1-888-494-8555
Fax: 770-206-2393
Website: www.raybiotech.com
Email: info@raybiotech.com

Applications

Table Summary of antibody applications and working conditions

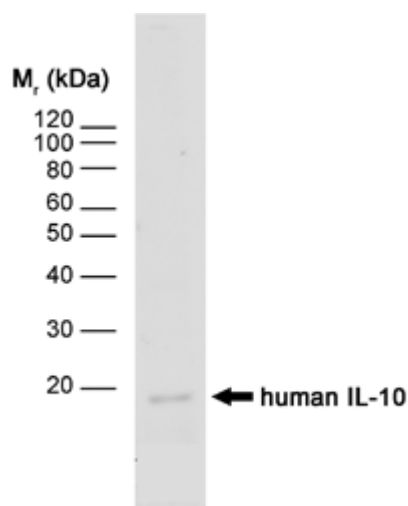
Options Functions	YES	NO	Not determined	Recommended Work dilution or concentration
ELISA	•			
Western Blotting	•			1/100 - 1/250
Immunohistochemistry			•	
Functional Assays	•			
Flow Cytometry (1)	•			

Note: Other applications are not tested yet. Optimal dilutions should be determined by the user. Membrane permeabilisation is required for this application.

Secondary Antibody Applications

Options Functions	YES	NO	Not determined	Recommended Work dilution or concentration
Immunoassay (ELISA, Western blot)	•			1:5000-1:10000

Image



Western blot analysis of human IL-10 recombinant protein probed with DS-MB-01620 followed by F(ab')₂ RABBIT ANTI RAT IgG:HRP

**The products are furnished for LABORATORY RESEARCH USE ONLY.
Not for diagnostic or therapeutic use.**



RayBiotech, Inc.

3607 Parkway Lane suite 200
Norcross, GA 30092
Tel: 770-729-2992, 1-888-494-8555
Fax: 770-206-2393
Website: www.raybiotech.com
Email: info@raybiotech.com

References

1. Yssel, H. *et al.* (1992) IL-10 is produced by subsets of human CD4⁺ T cell clones and peripheral blood T cells. *J. Immunol.* 149:2378-2384.
2. Burdin, N. *et al.* (1993) Epstein-Barr virus transformation induces B lymphocytes to produce human Interleukin-10. *J. Exp. Med.* 177:295-304.
3. Gomes, J. *et al.* (2003) Evidence that development of severe cardiomyopathy in human Chagas' disease is due to a Th1-specific immune response. *Infect. Immun.* 71:1185-1193.
4. Abrams, J. *et al.* (1992) Strategies of anti-cytokine monoclonal antibody development: Immunoassay of IL-10 and IL-5 in clinical samples. *Immunol. Rev.* 127:5-24.

**The products are furnished for LABORATORY RESEARCH USE ONLY.
Not for diagnostic or therapeutic use.**