



RayBiotech, Inc.

3607 Parkway Lane suite 200
Norcross, GA 30092
Tel: 770-729-2992, 1-888-494-8555
Fax: 770-206-2393
Website: www.raybiotech.com
Email: info@raybiotech.com

Certificate of Analysis and Data Sheet

Rabbit Anti Mouse CIDE-A (aa200-214)

With HRP-Conjugated Second Antibody

Catalog No.
DS-PB-00481

Target Species
Mouse

Isotype
Polyclonal IgG

Preparation

Preparation: Antisera to Murine CIDE-A were raised by repeated immunization of rabbits with highly purified antigen. Purified IgG prepared by affinity chromatography

Immunogen: Synthetic peptide corresponding to amino acids 200-214 of mouse CIDE-A

Specificity

DS-PB-00481 recognizes murine CIDE-A (cell death inducing DFF-like effector A) protein with homology to the N-terminal region of DFF45 (ICAD). CIDE-A expression has been reported to activate apoptosis in mammalian cells, which is inhibited by DFF45. DS-PB-00481 recognizes an epitope within the C terminal region of CIDE-A and does not cross react with CIDE-B.

Formulation

Product Type: Polyclonal Antibody

Product Form: Purified IgG - liquid

Buffer Solution: Phosphate buffered saline

Preservative Stabilizers: 0.02% Sodium Azide

Approx. Protein Concentrations: IgG concentration 0.5mg/ml

Storage

Store at +4°C or at -20°C if preferred.

This product should be stored undiluted.

Storage in frost free freezers is not recommended. Avoid repeated freezing and thawing as this may denature the antibody. Should this product contain a precipitate we recommend microcentrifugation before use.

The products are furnished for LABORATORY RESEARCH USE ONLY.
Not for diagnostic or therapeutic use.



RayBiotech, Inc.

3607 Parkway Lane suite 200
Norcross, GA 30092
Tel: 770-729-2992, 1-888-494-8555
Fax: 770-206-2393
Website: www.raybiotech.com
Email: info@raybiotech.com

Applications

Table Summary of antibody applications and working conditions

Options Functions	YES	NO	Not determined	Recommended Work dilution or concentration
ELISA			.	
Western Blotting	.			1:500
Immunohistology - frozen			.	
Immunohistology - paraffin			.	
Immunohistology - resin			.	
Immunoprecipitation			.	
Flow Cytometry			.	
Immunodiffusion			.	
Neutralization			.	

Note: Other applications are not tested yet. Optimal dilutions should be determined by each laboratory for each application.

Secondary Antibody Applications

Options Functions	YES	NO	Not determined	Recommended Work dilution or concentration
Immunoassay (ELISA, Western blot)	.			1:5000-1:10000

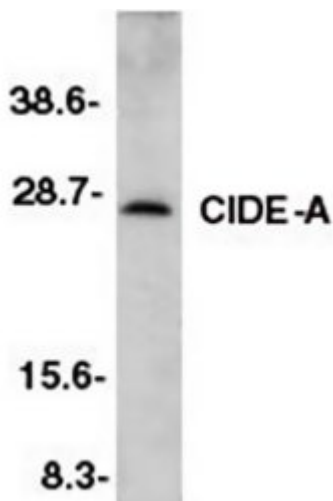
**The products are furnished for LABORATORY RESEARCH USE ONLY.
Not for diagnostic or therapeutic use.**



RayBiotech, Inc.

3607 Parkway Lane suite 200
Norcross, GA 30092
Tel: 770-729-2992, 1-888-494-8555
Fax: 770-206-2393
Website: www.raybiotech.com
Email: info@raybiotech.com

Image



References

1. Inohara, N. *et al.* (1998) CIDE, a novel family of cell death activators with homology to the 45kDa subunit of the DNA fragmentation factor EMBO J. 1:2526-33

**The products are furnished for LABORATORY RESEARCH USE ONLY.
Not for diagnostic or therapeutic use.**