



## RayBiotech, Inc.

3607 Parkway Lane suite 200  
Norcross, GA 30092  
Tel: 770-729-2992, 1-888-494-8555  
Fax: 770-206-2393  
Website: [www.raybiotech.com](http://www.raybiotech.com)  
Email: [info@raybiotech.com](mailto:info@raybiotech.com)

### Certificate of Analysis and Data Sheet

#### **Rabbit Anti Citrulline** **With HRP-Conjugated Second Antibody**

**Catalog No.**  
DS-PB-00487

**Target Species**  
Chemical

**Isotype**  
Polyclonal IgG

#### ***Preparation***

**Immunogen:** Citrulline-Glutaraldehyde-BSA

#### ***Specificity***

DS-PB-00487 recognizes Citrulline, an amino acid. Although citrulline is an amino acid, it is not incorporated into proteins during synthesis but is generated within proteins by the deimination of arginine.

Citrulline occurs normally in many proteins, such as Myelin basic protein (MBP) while others, such as fibrin become citrullinated during inflammation or apoptosis.

This antibody recognizes conjugated citrulline, but not free citrulline.

#### ***Formulation***

**Product Type:** Polyclonal Antibody

**Product Form:** Serum - liquid

**Preservative Stabilizers:** 0.05% Sodium Azide ( $\text{NaN}_3$ )

#### ***Storage***

Store at  $+4^\circ\text{C}$  or at  $-20^\circ\text{C}$  if preferred.

Storage in frost free freezers is not recommended. This product should be stored undiluted. Avoid repeated freezing and thawing as this may denature the antibody. Should this product contain a precipitate we recommend microcentrifugation before use.

**Shelf Life:** 18 months from date of shipment

**The products are furnished for LABORATORY RESEARCH USE ONLY.**  
**Not for diagnostic or therapeutic use.**



## RayBiotech, Inc.

3607 Parkway Lane suite 200  
Norcross, GA 30092  
Tel: 770-729-2992, 1-888-494-8555  
Fax: 770-206-2393  
Website: [www.raybiotech.com](http://www.raybiotech.com)  
Email: [info@raybiotech.com](mailto:info@raybiotech.com)

### Applications

**Table Summary of antibody applications and working conditions**

<b>Options Functions</b>	<b>YES</b>	<b>NO</b>	<b>Not determined</b>	<b>Recommended Work dilution or concentration</b>
ELISA	.			1:1000 - 1:2500
Western Blotting			.	
Immunohistology - frozen			.	
Immunohistology - paraffin			.	
Immunohistology - resin			.	
Immunoprecipitation			.	
Flow Cytometry			.	
Immunodiffusion			.	
Neutralization			.	

Note: Other applications are not tested yet. Optimal dilutions should be determined by each laboratory for each application.

### Secondary Antibody Applications

<b>Options Functions</b>	<b>YES</b>	<b>NO</b>	<b>Not determined</b>	<b>Recommended Work dilution or concentration</b>
Immunoassay (ELISA, Western blot)	.			1:5000-1:10000

**The products are furnished for LABORATORY RESEARCH USE ONLY.  
Not for diagnostic or therapeutic use.**

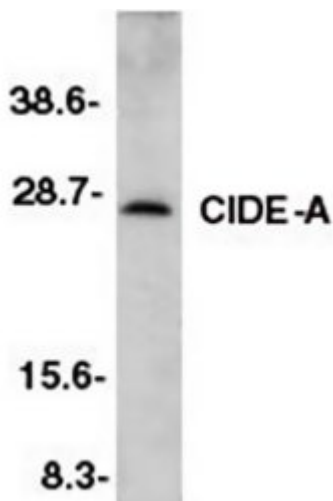


## RayBiotech, Inc.

3607 Parkway Lane suite 200  
Norcross, GA 30092  
Tel: 770-729-2992, 1-888-494-8555  
Fax: 770-206-2393  
Website: [www.raybiotech.com](http://www.raybiotech.com)  
Email: [info@raybiotech.com](mailto:info@raybiotech.com)

---

### Image



### References

1. Inohara, N. *et al.* (1998) CIDE, a novel family of cell death activators with homology to the 45kDa subunit of the DNA fragmentation factor EMBO J. 1:2526-33

**The products are furnished for LABORATORY RESEARCH USE ONLY.  
Not for diagnostic or therapeutic use.**