



## RayBiotech, Inc.

3607 Parkway Lane suite 200  
Norcross, GA 30092  
Tel: 770-729-2992, 1-888-494-8555  
Fax: 770-206-2393  
Website: [www.raybiotech.com](http://www.raybiotech.com)  
Email: [info@raybiotech.com](mailto:info@raybiotech.com)

### Certificate of Analysis and Data Sheet

## Goat Anti-ABCC4 / MRP4 With HRP-conjugated Secondary Antibody

**Catalog No.**  
ER-14-0071

**Accession Number**  
NP\_005836.2

#### ***Target Protein***

**Principal Names:** multidrug resistance-associated protein 4; multispecific organic anion transporter B, canalicular multispecific organic anion transporter (ABC superfamily), bA464I2.1 (ATP-binding cassette, sub-family C (CFTR/MRP), member 4), ATP-binding cassette, sub-family C, member 4, RP11-74A12.1, Multidrug Resistance Protein 4, canalicular multispecific organic anion transporter (ABC superfamily), ATP-binding cassette, sub-family C (CFTR/MRP), member 4, EST170205, MOAT-B, MOATB, MRP4, ABCC4

**Official Symbol:** ABCC4

**Accession Number(s):** NP\_005836.2

**Human GeneID(s):** 10257

**Non-Human GeneID(s):** 170924 (rat)

**Important Comments:** This antibody is expected to recognize isoform 1 (NP\_005836.2) only.

#### ***Immunogen***

Peptide with sequence CNGQPSTLTIFETAL, from the C Terminus of the protein sequence according to NP\_005836.2.

#### ***Purification and Storage***

Purified from goat serum by ammonium sulphate precipitation followed by antigen affinity chromatography using the immunizing peptide.

Supplied at 0.5 mg/ml in Tris saline, 0.02% sodium azide, pH7.3 with 0.5% bovine serum albumin. Aliquot and store at -20°C. Minimize freezing and thawing.

#### ***Applications Tested***

**Peptide ELISA:** antibody detection limit dilution 1:32000.

**Western blot:** Approx 170kDa band observed in rat renal cortex membranes (calculated MW of 149kDa according to Rat NP\_596902.1 and 150kDa according to Human NP\_005836.2). Data kindly provided by Dr. Antje Steinbach, Ernst-Moritz-Arndt University of Greifswald, Germany.

Recommended concentration: 1-3µg/ml.

**IHC:** In paraffin embedded Human Prostate shows strong cytoplasmic staining in small flat basal cells and weak cytoplasmic staining in the columnar secretory cells of the epithelium. Recommended concentration, 2-4µg/ml.

**The products are furnished for LABORATORY RESEARCH USE ONLY.  
Not for diagnostic or therapeutic use.**



## RayBiotech, Inc.

3607 Parkway Lane suite 200  
Norcross, GA 30092  
Tel: 770-729-2992, 1-888-494-8555  
Fax: 770-206-2393  
Website: [www.raybiotech.com](http://www.raybiotech.com)  
Email: [info@raybiotech.com](mailto:info@raybiotech.com)

---

**ICC/IF:** This antibody has been successfully used in ICC/IF for human primary hepatocytes as described in the following paper: Xu et al, Am J Physiol Gastrointest Liver Physiol. 2010 Jul;299(1):G126-35, PMID: 20395535.

### *Species Reactivity*

**Tested:** Human, Rat

**Expected from sequence similarity:** Human, Mouse, Rat

### *Specific Reference*

This antibody has been successfully used in the following papers:

Xu S, Weerachayaphorn J, Cai SY, Soroka CJ, Boyer JL.

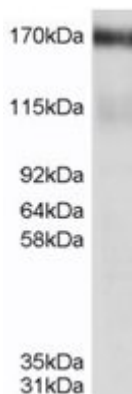
Aryl hydrocarbon receptor and NF-E2-related factor 2 are key regulators of human MRP4 expression. Am J Physiol Gastrointest Liver Physiol. 2010 Jul;299(1):G126-35.

**PMID:** 20395535

### *Secondary Antibody Applications*

Immunoassay (ELISA, Western blotting): 1:5,000-1:10,000

### *Image*



ER-14-0071 staining (0.5µg/ml) of rat renal cortex membranes (20µg total protein per lane).  
Detected by western blot using chemiluminescence.

**The products are furnished for LABORATORY RESEARCH USE ONLY.  
Not for diagnostic or therapeutic use.**