



## RayBiotech, Inc.

3607 Parkway Lane suite 200  
Norcross, GA 30092  
Tel: 770-729-2992, 1-888-494-8555  
Fax: 770-206-2393  
Website: [www.raybiotech.com](http://www.raybiotech.com)  
Email: [info@raybiotech.com](mailto:info@raybiotech.com)

# Certificate of Analysis and Data Sheet

## Goat Anti-Adiponectin Receptor 1

### With HRP-conjugated Secondary Antibody

**Catalog No.**  
ER-14-0098

**Accession Number**  
NP\_057083.2; NP\_001121159.1

#### ***Target Protein***

**Principal Names:** TESBP1A, FLJ42464, FLJ25385, CGI45, CGI-45 protein, PAQR1, CGI-45, ACDCR1, HGNC:24040, ADIPOR1, adiponectin receptor 1

**Official Symbol:** ADIPOR1

**Accession Number(s):** NP\_057083.2; NP\_001121159.1

**Human GeneID(s):** 51094

**Important Comments:** Variants (NP\_057083.2; NP\_001121159.1) encode the same protein.

#### ***Immunogen***

Peptide with sequence RYGLEGGCTDDTLL, from the C Terminus of the protein sequence according to NP\_057083.2; NP\_001121159.1.

#### ***Purification and Storage***

Purified from goat serum by ammonium sulfate precipitation followed by antigen affinity chromatography using the immunizing peptide.

Supplied at 0.5 mg/ml in Tris saline, 0.02% sodium azide, pH7.3 with 0.5% bovine serum albumin. Aliquot and store at -20°C. Minimize freezing and thawing.

#### ***Applications Tested***

**Peptide ELISA:** Antibody detection limit dilution 1:128000.

**Western blot:** Approx 38kDa band observed in Human Skeletal Muscle lysates (calculated MW of 42.6kDa according to NP\_057083.2). Recommended concentration: 0.1-0.3µg/ml.

#### ***Species Reactivity***

**Tested:** Human

**Expected from sequence similarity:** Human, Mouse, Rat, Pig, Dog, Cow

#### ***Specific Reference***

The goat polyclonal antibody used in this paper was manufactured by us: Thrush AB, Heigenhauser GJ, Mullen KL, Wright DC, Dyck DJ. Palmitate acutely induces insulin resistance in isolated muscle from obese but not lean humans. Am J Physiol Regul Integr Comp Physiol. 2008 Apr;294(4):R1205-12. PMID: 18305020

**The products are furnished for LABORATORY RESEARCH USE ONLY.  
Not for diagnostic or therapeutic use.**



## RayBiotech, Inc.

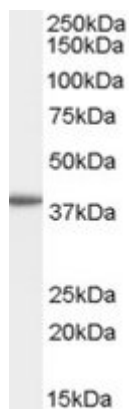
3607 Parkway Lane suite 200  
Norcross, GA 30092  
Tel: 770-729-2992, 1-888-494-8555  
Fax: 770-206-2393  
Website: [www.raybiotech.com](http://www.raybiotech.com)  
Email: [info@raybiotech.com](mailto:info@raybiotech.com)

---

### *Secondary Antibody Applications*

Immunoassay (ELISA, Western blotting): 1:5,000-1:10,000

### *Images*



ER-14-0098 (0.1 $\mu$ g/ml) staining of Human Muscle lysate (35 $\mu$ g protein in RIPA buffer).  
Primary incubation was 1 hour. Detected by chemiluminescence.

**The products are furnished for LABORATORY RESEARCH USE ONLY.  
Not for diagnostic or therapeutic use.**