

RayBiotech, Inc.

3607 Parkway Lane suite 100
Norcross, GA 30092
Tel: 770-729-2992, 1-888-494-8555
Fax: 770-206-2393
Website: www.raybiotech.com
Email: info@raybiotech.com

Certificate of Analysis and Data Sheet

Goat Anti-ALS2CR2 / ILPIP, With HRP-conjugated Secondary Antibody

Catalog No.

ER-14-0134

Accession Number

NP_061041.2; AAF71042.1

Target Protein

Principal Names: STRADB antibody, ALS2CR2 antibody, ILPIP antibody, PAPK antibody, ILPIPA antibody, CALS-21 antibody, PRO1038 antibody, amyotrophic lateral sclerosis 2 (juvenile) chromosome region, candidate 2 antibody, ILP-interacting protein ILPIPA antibody, STE20-related kinase adaptor beta antibody, STRAD beta antibody, pseudokinase ALS2CR2 antibody

Official Symbol: STRADB

Accession Number(s): NP_061041.2; AAF71042.1

Human GeneID(s): 55437

Important Comments: This is expected to recognize both human isoforms: ILPIP-alpha (NP_061041.2) and ILPIP-beta (AAF71042.1).

Immunogen

Peptide with sequence CDFPDEKDSYWEF, from the C Terminus of the protein sequence according to NP_061041.2; AAF71042.1.

Purification and Storage

Purified from goat serum by ammonium sulphate precipitation followed by antigen affinity chromatography using the immunizing peptide.

Supplied at 0.5 mg/ml in Tris saline, 0.02% sodium azide, pH7.3 with 0.5% bovine serum albumin.

Aliquot and store at -20°C. Minimize freezing and thawing.

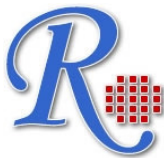
Applications Tested

Peptide ELISA: antibody detection limit dilution 1:32000.

Western blot: Approx 35kDa band observed in Human Heart, Liver and Muscle lysates (calculated MW of 47.0kDa according to NP_061041.2 (alpha isoform) and 31.2kDa according to AAF71042.1 (beta isoform). In transfected HEK293 transiently expressing ILPIP a band of approx. 48kDa is observed. This band is not observed in the non-transfected HEK293. Recommended concentration 1-3µg/ml.

IHC: Immunohistochemistry: In paraffin embedded Human Heart shows staining of myocardial fibres in transverse section. Recommended concentration, 3-5µg/ml.

**The products are furnished for LABORATORY RESEARCH USE ONLY.
Not for diagnostic or therapeutic use.**



RayBiotech, Inc.

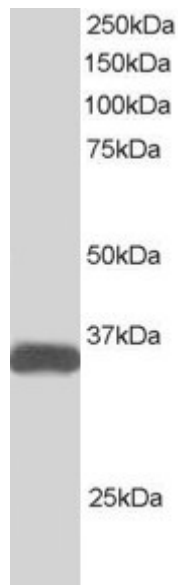
3607 Parkway Lane suite 100
Norcross, GA 30092
Tel: 770-729-2992, 1-888-494-8555
Fax: 770-206-2393
Website: www.raybiotech.com
Email: info@raybiotech.com

Species Reactivity

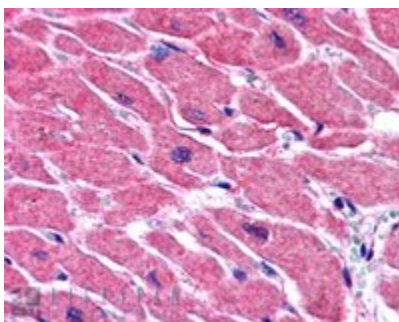
Tested: Human

Expected from sequence similarity: Human, Dog, Cow

Image



ER-14-0134 (1 μ g/ml) staining of Human Heart lysate (35 μ g protein in RIPA buffer). Primary incubation was 1 hour. Detected by chemiluminescence.



ER-14-0134 (3.8 μ g/ml) staining of paraffin embedded Human Heart. Steamed antigen retrieval with citrate buffer pH 6, AP-staining.

Secondary Antibody Applications

Immunoassay (ELISA, Western blotting): 1:5,000-1:10,000

**The products are furnished for LABORATORY RESEARCH USE ONLY.
Not for diagnostic or therapeutic use.**