



RayBiotech, Inc.

3607 Parkway Lane suite 200
Norcross, GA 30092
Tel: 770-729-2992, 1-888-494-8555
Fax: 770-206-2393
Website: www.raybiotech.com
Email: info@raybiotech.com

Certificate of Analysis and Data Sheet

Goat Anti-Bradykinin Receptor B1

With HRP-conjugated Secondary Antibody

Catalog No.
ER-14-0246

Target Species
Human

Accession Number
NP_000701.2

Target Protein

Principal Names: bradykinin receptor 1, bradykinin B1 receptor, BK-1 receptor, BRADYB1, BKR1, BKB1R, B1R, B1BKR, BDKRB1, bradykinin receptor B1

Official Symbol: BDKRB1

Accession Number(s): NP_000701.2

Human GeneID(s): [623](#)

Immunogen

Peptide with sequence KVVWELYKQCTPK, from the internal region of the protein sequence according to NP_000701.2.

Purification and Storage

Purified from goat serum by ammonium sulphate precipitation followed by antigen affinity chromatography using the immunizing peptide.

Supplied at 0.5 mg/ml in Tris saline, 0.02% sodium azide, pH7.3 with 0.5% bovine serum albumin.

Aliquot and store at -20°C. Minimize freezing and thawing.

Applications Tested

Peptide ELISA: antibody detection limit dilution 1:1000.

Western blot: Approx 35kDa band observed in lysates of cell lines Daudi, K562 and U937 calculated MW of 40.5kDa according to NP_000701.2). The observed molecular weight corresponds to earlier findings with different antibodies from other commercial sources. Recommended concentration: 2-4µg/ml.

Species Reactivity

Tested: Human

Expected from sequence similarity: Human

Background Reference

Bengtson SH, Eddleston J, Christiansen SC, Zuraw BL. Double-stranded RNA increases kinin B1 receptor expression and function in human airway epithelial cells. *Int Immunopharmacol.* 2007 Dec 20;7(14):1880-7. Epub 2007 Jul 30 **PMID:** 18039525

**The products are furnished for LABORATORY RESEARCH USE ONLY.
Not for diagnostic or therapeutic use.**



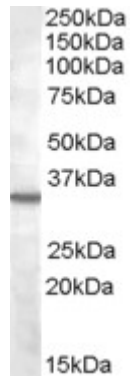
RayBiotech, Inc.

3607 Parkway Lane suite 200
Norcross, GA 30092
Tel: 770-729-2992, 1-888-494-8555
Fax: 770-206-2393
Website: www.raybiotech.com
Email: info@raybiotech.com

Secondary Antibody Applications

Immunoassay (ELISA, Western blotting): 1:5,000-1:10,000

Images



This product (2 μ g/ml) staining of K562 lysate (35 μ g protein in RIPA buffer).
Primary incubation was 1 hour. Detected by chemiluminescence.

**The products are furnished for LABORATORY RESEARCH USE ONLY.
Not for diagnostic or therapeutic use.**