



RayBiotech, Inc.

3607 Parkway Lane suite 200
Norcross, GA 30092
Tel: 770-729-2992, 1-888-494-8555
Fax: 770-206-2393
Website: www.raybiotech.com
Email: info@raybiotech.com

Certificate of Analysis and Data Sheet

Goat Anti-CAPZB

With HRP-conjugated Secondary Antibody

Catalog No.

ER-14-0269

Accession Number

NP_004921.1

Target Protein

Principal Names: F-actin capping protein beta subunit, Cap Z, MGC129750, MGC129749, MGC104401, RP4-657E11.7, Cap Z, CAPPB, CAPZ, CAPB, capping protein (actin filament) muscle Z-line, beta, CAPZB

Official Symbol: CAPZB

Accession Number(s): NP_004921.1

Human GeneID(s): 832

Non-Human GeneID(s): 12345 (mouse)

Important Comments: This antibody is expected to be specific for the beta2 isoform of capping protein, found in non-muscle cells and should not recognise the beta1 form.

Immunogen

Peptide with sequence NDLVEALKRKQQC, from the C Terminus of the protein sequence according to NP_004921.1.

Purification and Storage

Purified from goat serum by ammonium sulphate precipitation followed by antigen affinity chromatography using the immunizing peptide.

Supplied at 0.5 mg/ml in Tris saline, 0.02% sodium azide, pH7.3 with 0.5% bovine serum albumin. Aliquot and store at -20°C. Minimize freezing and thawing.

Applications Tested

Peptide ELISA: antibody detection limit dilution 1:32000.

Western blot: Approx 30kDa band observed in Hela, Jurkat and Placenta lysates (calculated MW of 30.6kDa according to NP_004921.1). Recommended for use at 0.5-2µg/ml.

Species Reactivity

Tested: Human, Rat

Expected from sequence similarity: Human, Mouse, Rat, Dog, Pig, Cow

**The products are furnished for LABORATORY RESEARCH USE ONLY.
Not for diagnostic or therapeutic use.**



RayBiotech, Inc.

3607 Parkway Lane suite 200
Norcross, GA 30092
Tel: 770-729-2992, 1-888-494-8555
Fax: 770-206-2393
Website: www.raybiotech.com
Email: info@raybiotech.com

Specific References

This antibody has been successfully used in the following papers:

Wang CY, Chen JK, Wu YT, Tsai MJ, Shyue SK, Yang CS, Tzeng SF.

Reduction in antioxidant enzyme expression and sustained inflammation enhance tissue damage in the subacute phase of spinal cord contusive injury.

J Biomed Sci. 2011 Feb 7;18:13.

PMID: 21299884

The goat polyclonal antibody used in the following papers was manufactured by us:

Shen X, Xi G, Radhakrishnan Y, Clemmons DR.

Identification of novel SHPS-1-associated proteins and their roles in regulation of insulin-like growth factor-dependent responses in vascular smooth muscle cells.

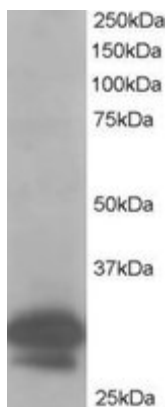
Mol Cell Proteomics. 2009 Jul;8(7):1539-51.

PMID: 19299420

Secondary Antibody Applications

Immunoassay (ELISA, Western blotting): 1:5,000-1:10,000

Image



ER-14-0269 staining (1 μ g/ml) of HeLa lysate (RIPA buffer, 35 μ g total protein per lane).
Primary incubated for 1 hour. Detected by western blot using chemiluminescence.

**The products are furnished for LABORATORY RESEARCH USE ONLY.
Not for diagnostic or therapeutic use.**