



RayBiotech, Inc.

3607 Parkway Lane suite 200
Norcross, GA 30092
Tel: 770-729-2992, 1-888-494-8555
Fax: 770-206-2393
Website: www.raybiotech.com
Email: info@raybiotech.com

Certificate of Analysis and Data Sheet

Goat Anti-Cathepsin F

With HRP-conjugated Secondary Antibody

Catalog No.

ER-14-0278

Accession Number

NP_003784.2.

Target Protein

Principal Names: CTSF, cathepsin F, HGNC:2531, CATSF

Official Symbol: CTSF

Accession Number(s): NP_003784.2

Human GeneID(s): 8722

Immunogen

Peptide with sequence CGVNTMASSAVVD, from the C Terminus of the protein sequence according to NP_003784.2.

Purification and Storage

Purified from goat serum by ammonium sulfate precipitation followed by antigen affinity chromatography using the immunizing peptide.

Supplied at 0.5 mg/ml in Tris saline, 0.02% sodium azide, pH7.3 with 0.5% bovine serum albumin.

Aliquot and store at -20°C. Minimize freezing and thawing.

Applications Tested

Peptide ELISA: antibody detection limit dilution 1:32000.

Western blot: Experiments gave bands at approx 30kDa and 35kDa in Human Prostate and Ovary lysates after 0.3µg/ml antibody staining. These bands correspond to earlier findings in literature with different antibodies (Wang et al, J Biol Chem. 1998 Nov 27;273(48):32000-8; PMID: 9822672). This protein has a calculated MW of 53.4kDa according to NP_003784.2. Recommended concentration: 0.3-1µg/ml.

Species Reactivity

Tested: Human

Expected from sequence similarity: Human, Mouse, Rat, Dog

**The products are furnished for LABORATORY RESEARCH USE ONLY.
Not for diagnostic or therapeutic use.**



RayBiotech, Inc.

3607 Parkway Lane suite 200
Norcross, GA 30092
Tel: 770-729-2992, 1-888-494-8555
Fax: 770-206-2393
Website: www.raybiotech.com
Email: info@raybiotech.com

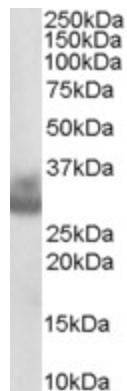
Background Reference

Dorn A, Zhao H, Granberg F, Hosel M, Webb D, Svensson C, Pettersson U, Doerfler W. Identification of specific cellular genes up-regulated late in adenovirus type 12 infection. J Virol. 2005 Feb;79(4):2404-12. PMID: 15681441

Secondary Antibody Applications

Immunoassay (ELISA, Western blotting): 1:5,000-1:10,000

Image



ER-14-0278 (0.3 μ g/ml) staining of Human Ovary lysate (35 μ g protein in RIPA buffer).
Primary incubation was 1 hour. Detected by chemiluminescence.

**The products are furnished for LABORATORY RESEARCH USE ONLY.
Not for diagnostic or therapeutic use.**