



RayBiotech, Inc.

3607 Parkway Lane suite 200
Norcross, GA 30092
Tel: 770-729-2992, 1-888-494-8555
Fax: 770-206-2393
Website: www.raybiotech.com
Email: info@raybiotech.com

Certificate of Analysis and Data Sheet

Goat anti CD274 / PD-L1

With HRP-conjugated Secondary Antibody

Catalog No.
ER-14-0294

Target Species
Human

Description

Synonyms: CD274; CD274 antigen; PD-L1; PDCD1LG1; B7-H; B7H1; PDL1; PDCD1L1; programmed cell death 1 ligand 1; PDL1; HGNC:17635; CD274 molecule; MGC142294; MGC142296

Official Symbol: CD274

Accession Numbers: NP_054862.1

Preparation

Purification: Purified from goat serum by ammonium sulfate precipitation followed by antigen affinity chromatography using the immunizing peptide.

Immunogen: Peptide with sequence CKKQSDTHLEET, from the C Terminus of the protein sequence according to NP_054862.1.

Formulation: Supplied at 0.5 mg/ml in Tris saline, 0.02% sodium azide, pH7.3 with 0.5% bovine serum albumin.

Storage

Aliquot and store at -20°C. Minimize freezing and thawing.

Species Reactivity

Tested: Human

Expected from sequence similarity: Human

Reference

Thompson RH, Gillett MD, Cheville JC, Lohse CM, Dong H, Webster WS, Krejci KG, Lobo JR, Sengupta S, Chen L, Zincke H, Blute ML, Strome SE, Leibovich BC, Kwon ED. Costimulatory B7-H1 in renal cell carcinoma patients: Indicator of tumor aggressiveness and potential therapeutic target. Proc Natl Acad Sci U S A. 2004 Dec 7;101(49):17174-9. Epub 2004 Dec 7. PMID: 15569934

**The products are furnished for LABORATORY RESEARCH USE ONLY.
Not for diagnostic or therapeutic use.**



RayBiotech, Inc.

3607 Parkway Lane suite 200
Norcross, GA 30092
Tel: 770-729-2992, 1-888-494-8555
Fax: 770-206-2393
Website: www.raybiotech.com
Email: info@raybiotech.com

Applications

Table Summary of antibody applications and working conditions

Options Functions	YES	NO	Not determined	Recommended Work dilution or concentration
Peptide ELISA (1)	.			
Western Blot (2)	.			0.3-2 µg/ml
Immunohistochemistry			.	

Note: Other applications are not tested yet. Optimal dilutions should be determined by each laboratory for each application.

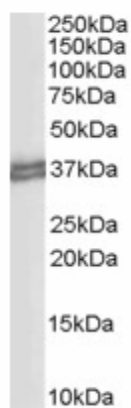
(1) Antibody detection limit dilution 1:32,000

(2) Approx 35+37kDa double band observed in Human Heart lysates (calculated MW of 33.3kDa according to NP_054862.1).

Secondary Antibody Applications

Options Functions	YES	NO	Not determined	Recommended Work dilution or concentration
Immunoassay (ELISA, Western blot)	.			1:5000-1:10000

Image



ER-14-0294 (0.3µg/ml) straining of Human Heart lysate (RIPA buffer, 30µg total protein per lane).
Primary incubated for 1 hour. Detected by western blot using chemiluminescence.

**The products are furnished for LABORATORY RESEARCH USE ONLY.
Not for diagnostic or therapeutic use.**