

Catalog No. LF-MA0049

MONOCLONAL ANTIBODY



Anti-Phospholipase C γ 1 (1F1)

Background : The mammalian Phospholipase C γ (PLC γ) family has two closely related proteins, PLC γ 1 and PLC γ 2. The PLC γ isozymes have the core structure domains and a unique array of domains containing an additional PH domain, two SH2 domains and one SH3 domain. In response to extracellular stimuli, such as hormones and growth factors, receptor tyrosine kinases (RTKs) phosphorylate and activate PLC γ . Activated PLC γ catalyzes hydrolysis of phosphatidylinositol 4,5-bisphosphate (PIP₂) to produce the metabolic second messenger molecules inositol 1,4,5-triphosphate (IP₃) and diacylglycerol (DAG).

Immunogen : Recombinant human protein purified from *E.coli*

Host : Mouse

Clone number : 1F1

Isotype : IgG2a, k

Size : 100ul

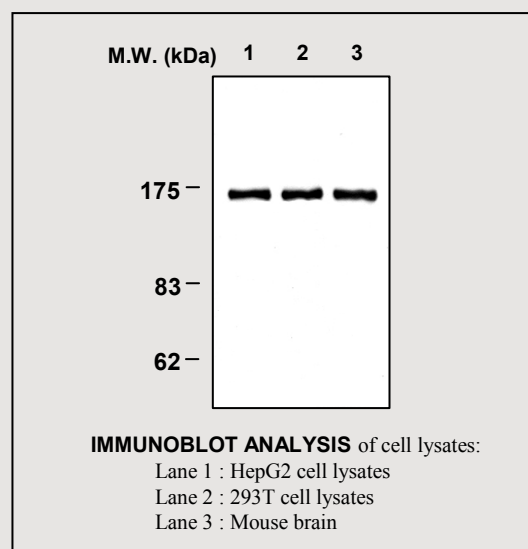
Composition : PBS containing 50% glycerol

Positive control : HepG2 Cell lysates

Storage : Store for 1 year at -20°C from date of shipment

Species cross reactivity

Human +	Mouse +	Rat +
------------	------------	----------



Applications :

Western Blotting (1:4000)

Immunoprecipitation (1ul/400ul lysates)

Background Reference :

- 1) Katan, M. (1998) Biochim. Biophys. Acta, 1436, 5-17
- 2) Singer, W.D. et al. (1997) Annu. Rev. Biochem. 66, 475-509
- 3) Wang, Z. et al. (1998) Mol. Cell. Biol. 18, 590-597

FOR RESEARCH PURPOSE ONLY
NOT FOR DIAGNOSTIC OR THERAPEUTIC USE