

**Catalog No. LF-MA0138**

**MONOCLONAL ANTIBODY**



## Anti- $\alpha$ 2-macroglobulin(9A3)

**Background:**  $\alpha$ 2-Macroglobulin ( $\alpha$ 2M), is a 720-kDa homotetrameric glycoprotein composed of four identical 180 kDa subunit.  $\alpha$ 2M shares with other  $\alpha$ -macroglobulins an extraordinary binding ability for different ligands. This allows the  $\alpha$ -macroglobulins to serve as humoral defense barriers against foreign peptides in the plasma.  $\alpha$ 2M often regarded as a panprotease inhibitor, because it interacts and captures virtually any proteinase.  $\alpha$ 2M can diffuse amyloid plaques In the brain of Alzheimer's disease (AD) patients.

**Immunogen :**  $\alpha$ 2-macroglobulin protein purified from Human plasma

**Host :** Mouse

**Clone number :** 9A3

**Isotype :** IgG2b, k

**Size :** 100  $\mu$ l

**Composition:** PBS containing 50% glycerol

**Storage :** Store for 1 year at  $-20^{\circ}\text{C}$  from date of shipment

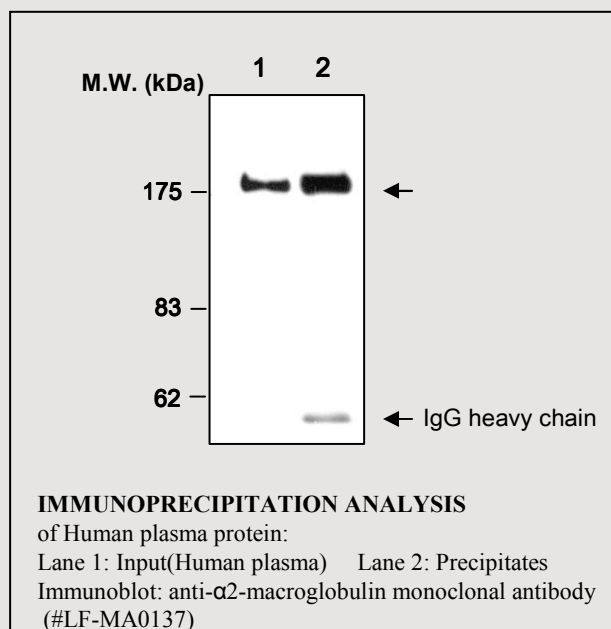
**Positive control :** Human plasma

### Species cross reactivity

**Human**  
+

**Mouse**  
NT

**Rat**  
NT



### Applications :

ELISA

Immunoprecipitation(1  $\mu$ l / 400  $\mu$ l lysates)

### Background Reference :

- (1) Borth, W (1992) *FASEB. J.* 6(15): 3345-3353
- (2) Travis J *et al* (1983) *Annu. Rev. Biochem.* 52: 655-709

FOR RESEARCH PURPOSE ONLY  
NOT FOR DIAGNOSTIC OR THERAPEUTIC USE