

Catalog No. LF-MA0141

MONOCLONAL ANTIBODY



## Anti-Selenoprotein-P (37A1)

**Background :** Selenoprotein-P (SelP) is the major selenoprotein in human blood plasma and a transport protein which is carrying selenium to various extrahepatic tissues. Though its expression is detected in most tissues, highest amounts are produced by the liver, which secretes highly glycosylated SelP into plasma. Purification of human SelP yields two distinct isoforms with 61 and 55 kDa, differing in selenium content. SelP also has been shown to chelate heavy metals such as cadmium and mercury, and there are several evidences about its serum antioxidant capacity and protection against oxidative stress. Selenium deficiency predispose to several pathological condition such as cancer, coronary heart disease and liver necrosis although the biological function of SelP in various pathologic conditions has not been established.

**Immunogen :** Selenoprotein-P protein purified from Human plasma

**Host :** Mouse

**Clone number :** 37A1

**Isotype :** IgG1, k

**Size :** 100  $\mu$ l

**Composition:** PBS containing 50% glycerol

**Positive control :** Human plasma

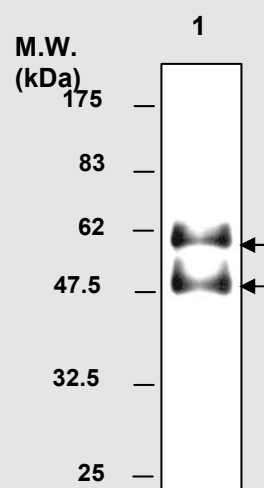
**Storage :** Store for 1 year at  $-20^{\circ}\text{C}$  from date of shipment

### Species cross reactivity

Human  
+

Mouse  
NT

Rat  
NT



**IMMUNOBLOT ANALYSIS** of Human plasma protein:  
Lane 1: SelP protein isolated from Human plasma

### Applications :

ELISA  
Western Blotting (1:2,000)  
Immunohistochemistry

### Background Reference :

- (1) Steinbrenner, H. *et al* (2006) *Free Radic. Biol. Med.* 40: 1513-1523
- (2) Burk, R.F. *et al* (2005) *Annu. Rev. Nutr.* 25: 215-235

FOR RESEARCH PURPOSE ONLY  
NOT FOR DIAGNOSTIC OR THERAPEUTIC USE