

Catalog No. LF-MA0160

MONOCLONAL ANTIBODY



Anti-Serum amyloid P component(6E6)

Background : Serum amyloid P component (SAP) is a normal plasma protein and a universal non-fibrillar constituent of amyloid deposits. SAP is a member of the pentraxin protein family which includes C-reactive protein. Human SAP is secreted and catabolized only by hepatocytes, and consists of five identical non-covalently associated subunits, each with a molecular mass of 25 kDa, which are non-covalently associated in a pentameric disc-like ring. SAP is a calcium-dependent ligand binding protein, which binds to DNA and chromatin, and to all known types of amyloid fibrils accounting for its specific accumulation in amyloid deposits. Serum amyloid P component scintigraphy is a non-invasive and quantitative method for imaging amyloid deposits, which produces diagnostic images in most patients with systemic amyloidosis, and can be used repeatedly to monitor the course of the disease.

Immunogen : Protein purified from Human plasma

Host : Mouse

Clone number : 6E6

Isotype : IgG1, k

Size : 100 μ l

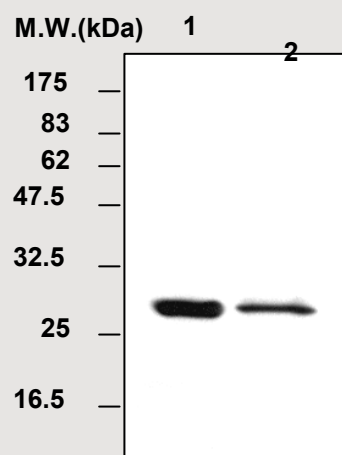
Composition : PBS containing 50% glycerol

Positive control : Human plasma

Storage : Store for 1 year at -20°C from date of shipment

Species cross reactivity

Human	Mouse	Rat
+	NT	NT



Immunoblot Analysis of human plasma protein
Lane 1 : SAP protein isolated from human plasma
Lane 2 : Human plasma

Applications : ELISA
Western blotting (1:1,000)
Immunoprecipitation (1 μ l/400 μ l for lysates)

Background Reference :

- 1) Hawkins PN, Curr Opin Nephrol Hypertens. 2002 vol.11(6): pp.649-55.
- 2) Haas CJ, FEMS Immunol Med Microbiol. 1999 vol.;26(3-4): pp.197-202.
- 3) Maeda S, Amyloid. 2003 vol.10 Suppl 1: pp.17-20.

FOR RESEARCH PURPOSE ONLY
NOT FOR DIAGNOSTIC OR THERAPEUTIC USE