

**Catalog No. LF-MA0166**

**MONOCLONAL ANTIBODY**



## Anti- $\alpha$ 1-antichymotrypsin precursor(71A1)

**Background:** Alpha-1-antichymotrypsin (ACT) is a glycoprotein with a molecular weight of 55~68 kDa. 25% of its weight consists of various sugars. The volatility of their weight results in changes in the weight of ACT. It inhibits chymotrypsin-like proteinases in vivo and has cytotoxic killer-cell activity in vitro. The protein also has a role as an acute-phase protein and is active in the control of immunologic and inflammatory processes and it is a tumor marker. During an acute phase reaction plasma ACT levels might increase rapidly to more than 5 times their normal value. ACT has been shown to promote A $\beta$  polymerization in vitro and in vivo. Levels of ACT protein in plasma and cerebrospinal fluid from Alzheimer's patients have been found to correlate with progression of dementia.

**Immunogen :** Protein purified from Human plasma

**Host :** Mouse

**Clone number :** 71A1

**Isotype :** IgG1

**Size :** 100  $\mu$ l

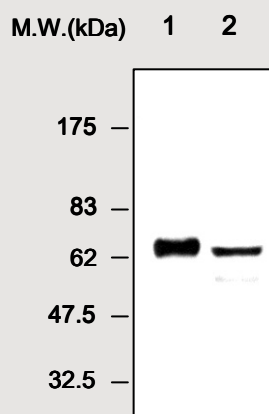
**Compositon :** PBS containing 50% glycerol

**Positive control :** Human plasma

**Storage :** Store for 1 year at  $-20^{\circ}\text{C}$  from date of shipment

### Species cross reactivity

Human +	Mouse NT	Rat NT
------------	-------------	-----------



**Immunoblot Analysis** of human plasma protein  
Lane 1 :  $\alpha$ 1-antichymotrypsin precursor isolated from human plasma  
Lane 2 : Human plasma

### Applications :

Western blotting (1:1,000)  
Not for ELISA and IP

### Background Reference :

- 1) Zhang S, Janciauskiene S. J Alzheimers Dis. 2002; vol.4(2): pp.115-22.
- 2) J, Levy M, Dickson DW, Brain. 2006; vol.129(Pt 11): pp.3020-34.

FOR RESEARCH PURPOSE ONLY  
NOT FOR DIAGNOSTIC OR THERAPEUTIC USE