

Catalog No. LF-PA0043

POLYCLONAL ANTIBODY



Anti-Green Fluorescent Protein

Background : Green fluorescent protein (GFP) isolated from jellyfish *Aequorea aequorea* is a 238 amino acid protein with an apparent molecular weight of about 27-30 kDa on SDS-PAGE. Its chromophore is formed by cyclisation and oxidation of the three amino acids Ser65, Tyr66, and Gly67. The numerous applications include : using GFP as a reporter for gene expression, as a marker to study cell lineage during development and as a tag to localize proteins in living cells. Other applications of GFP include assessment of protein protein interactions through the yeast two hybrid system and measurement of distance between proteins through fluorescence energy transfer (FRET) protocols. GFP technology has considerably contributed to a greater understanding of cellular physiology.

Immunogen : Recombinant green fluorescent protein

Host : Rabbit

Size : 100 μ l

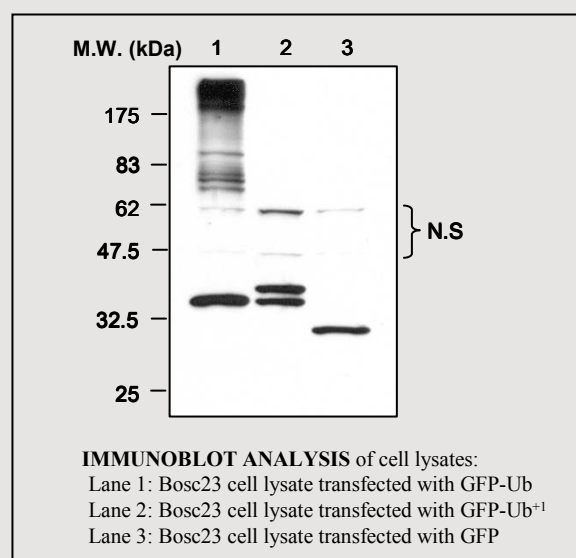
Composition : PBS containing 50% glycerol

Positive control : Bosc23 cell lysate transfected with GFP

Storage : Store for 1 year at -20°C from date of shipment

Species cross reactivity

Human +	Mouse NT	Rat NT
------------	-------------	-----------



Application :

ELISA

Western blotting (1:1000~5000)

Immunoprecipitation (1~2 μ l / 400 μ l lysates)

Background Reference :

1) Hans-Hednrmann Gerdes et al. (1996) *FEBS Letters*

389:44-47

2) J.C. March et al. (2003) *Appl Microbiol Biotechnol* 62:303-315

FOR RESEARCH PURPOSE ONLY
NOT FOR DIAGNOSTIC OR THERAPEUTIC USE