

**Catalog No. LF-PA0109**

**POLYCLONAL ANTIBODY**



## Anti-Lactoferrin

**Background :** Lactoferrin(Lf), one of transferrin family, is found in external fluids, including milk and mucosal secretions, and prominent components of the secondary granules of neutrophils. Lf consists of a single polypeptide chain (approximately 80 kDa) folded into two structurally homologous lobes, each of which can reversibly bind one ferric ion ( $Fe^{3+}$ ). Lf plays a central role in iron metabolism and host defense system against microbial infection.

**Immunogen :** Recombinant human protein purified from *E.coli*

**Host :** Rabbit

**Size :** 100  $\mu$ l

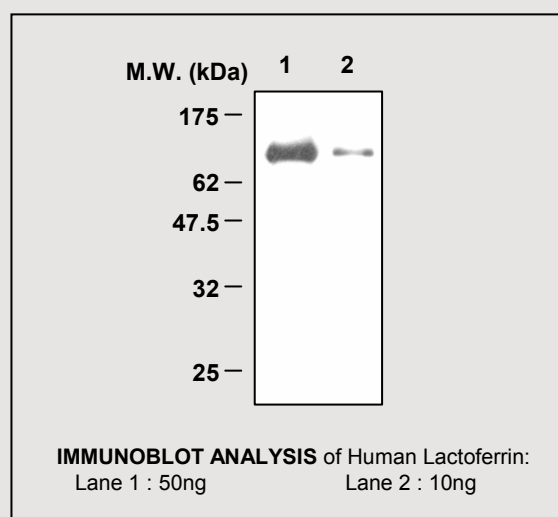
**Composition :** PBS containing 50% glycerol

**Positive control :** Human Lactoferrin purified from first breast milk

**Storage :** store for 1 year at  $-20^{\circ}C$  from date of shipment

### Species cross reactivity

Human +	Mouse NT	Rat NT
---------	----------	--------



### Applications :

Western Blotting (1:2,000)

Immunoprecipitation was not tested

### Background Reference:

- 1) Farnaud, S. and Evans, R.W. (2003) Mol. Immunol. 40, 395-405
- 2) Baker, H.M. et al. (2003) Proc. Natl. Acad. Sci. USA 100, 3579-3583
- 3) Appelmelk, B.J. et al. (1994) Infect. Immun. 62, 2628-2632