

Catalog No. LF-PA0141

POLYCLONAL ANTIBODY



Anti-Cyclin D1

Background : Cyclin D1 (Bcl-1 oncogene product), is a member of the Cyclin family that help control transition between phases of the cell cycle by acting as regulatory subunits of the Cdks. The D-type Cyclins are composed of three subtypes, Cyclin D1, D2 and D3.

Cyclin D1 is essential for control of the cell cycle at the G1/S transitions and interacts with Cdk4 or Cdk6 protein kinases. On the recent study, Cyclin D1 regulates cellular metabolism, fat cell differentiation and cellular migration. Also Cyclin D1 involves in development and cancer.

Immunogen : His-tagged recombinant human cyclin D1 protein purified from *E.coli*

Host : Rabbit

Size : 100 μ l

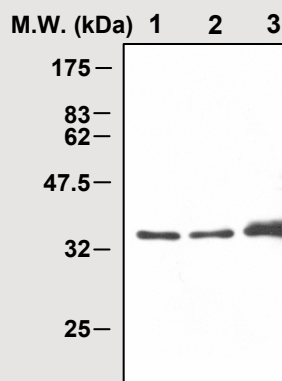
Composition : PBS containing 50% glycerol

Positive control : U87 MG cell lysates

Storage : Store for 1 year at -20°C from date of shipment

Species cross reactivity

Human	Mouse	Rat
+	-	-



IMMUNOBLOT ANALYSIS of cell lysates:

Lane 1: SH-SY5Y cell lysates

Lane 2: SK-N-SH cell lysates

Lane 3: U87 MG cell lysates

Applications :

Westernblotting(1:2,000)

Immunoprecipitation was not tested

Background Reference:

- (1) Toru Motokura. et al. (1992) *J. Biol. Chem.* **267** (28):20412-20415
- (2) Xiang Zhang et al (2005) *Journal of Clinical Neuroscience* **12**(2) : 166-168
- (3) Sherr C.J. (1993) *Cell* **73**:1059-1065
- (4) Hirofumi Nakagami et al (2002) *The Plant Cell*. **14**:1847-1857

FOR RESEARCH PURPOSE ONLY
NOT FOR DIAGNOSTIC OR THERAPEUTIC USE