



Clusterin Canine HEK293

Product Data Sheet

Type: Recombinant

Source: HEK293

Species: Canine

Other names: Apolipoprotein J, Apo J

Cat. No.:

RD472034100- (0.1 mg)

HEK

Description

Total 436 AA. MW: 50.72 kDa (calculated). N-terminal Flag-tag, 13 extra AA (highlighted).

Introduction to the Molecule

Clusterin is a 75-80 kD disulfide-linked heterodimeric protein containing about 30% of N-linked carbohydrate rich in sialic acid, but truncated forms targeted to the nucleus have also been identified.

The precursor polypeptide chain is cleaved proteolytically to remove the 22-mer secretory signal peptide and subsequently between residues 227/228 to generate the alpha and beta chains. These are assembled anti-parallel to give a heterodimeric molecule in which the cysteine-rich centers are linked by five disulfide bridges and are flanked by two predicted coiled-coil alpha-helices and three predicted amphipathic alpha-helices. The six sites of N-linked glycosylation are indicated as yellow spots.

Across a broad range of species clusterin shows 70% to 80% of sequence homology. It is ubiquitously expressed in most mammalian tissues and can be found in plasma, milk, urine, cerebrospinal fluid and semen.

It is able to bind and form complexes with numerous partners such as immunoglobulins, lipids, heparin, bacteria, complement components, paraoxonase, beta amyloid, leptin and others. Clusterin has been ascribed a plethora of functions such as phagocyte recruitment, aggregation induction, complement attack prevention, apoptosis inhibition, membrane remodelling, lipid transport, hormone transport and/or scavenging, matrix metalloproteinase inhibition.

A detailed mechanism of clusterin has not been defined. One tempting hypothesis says that clusterin is an extracellular chaperone protecting cells from stress induced by degraded and misfolded protein precipitates. Clusterin is up- or downregulated on the mRNA or protein level in many pathological and clinically relevant situations including cancer, organ regeneration, infection, Alzheimer disease, retinitis pigmentosa, myocardial infarction, renal tubular damage, autoimmunity and others.

Research topic

Others, Renal disease, Sepsis

Amino Acid Sequence

PGDYKDDDDK **PAGDQAVSDT** ELQEMSTEGS KYINKEIKNA LKGVKQIKTL IEQTNEERKS LLSNLEEAKK KKEDALNDTK
DSETKLKASQ GVCNDTMMAL WEECKPCLKQ TCMKFYARVC RSGSGLVGHQ LEEFLNQSSP FYFWMNGDRI DSLLENDRQQ
THALDVMQDS FNRASSIMDE LFQDRFFTRE PQDTYHYSPP SLFQRRPFFN PKFRIARNII PFPRFQPLNF HDMFQPFDDM
IHQAQQAMDV NLHRIPYHFP IEFPEEDNRT VCKEIRHNST GCLMKDQCE KCQEILSVDC SSNNPAQVQL RQELSNLSLQI
AEKFTKLYDE LLQSYQEKMF NTSSLLKQLN EQFSWVSQLA NLTSQSDPFY LQVTTVGSQT SDSNPVVGFT KVVVKLFDS
PITVMIPEAV SRNNPKFMET VAEKALQEYR QKHREE

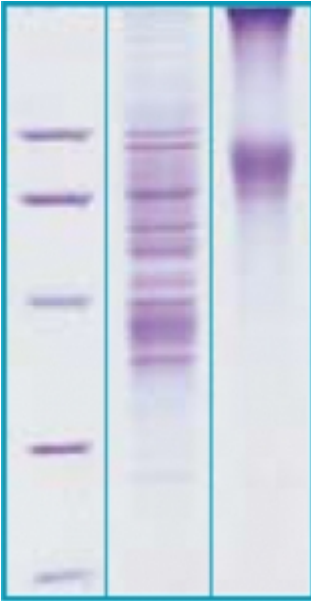
Source

HEK293

Purity

>95%

SDS-PAGE gel



12% SDS-PAGE separation of Canine Clusterin

- M.W. marker - 14, 21, 31, 45, 66, 97 kDa
- reduced and heated sample, 5µg/lane
- non-reduced and non-heated sample, 5µg/lane

Formulation

Filtered (0.4 µm) and lyophilized from 0.5 mg/ml in 20mM Tris buffer, 20mM NaCl, pH 7.5

Reconstitution

Add deionized water to prepare a working stock solution of approximately 0.5 mg/mL and let the lyophilized pellet dissolve completely. Product is not sterile! Please filter the product by an appropriate sterile filter before using it in the cell culture.

Shipping

At ambient temperature. Upon receipt, store the product at the temperature recommended below.

Storage, Stability/Shelf Life

Store lyophilized protein at -20°C. Lyophilized protein remains stable until the expiry date when stored at -20°C. Aliquot reconstituted protein to avoid repeated freezing/thawing cycles and store at -80°C for long term storage. Reconstituted protein can be stored at 4°C for a limited period of time; it does not show any change after one week at 4°C.

Quality Control Test

BCA to determine quantity of the protein.
SDS PAGE to determine purity of the protein.

Applications

ELISA, Western blotting

Note

This product is intended for research use only.

Gentaur Molecular Products
Voortstraat 49
1910 Kampenhout, Belgium
<http://www.gentaur-worldwide.com>