

bs-0012M-PE-Cy7

• Mouse Anti- α -Synuclein Polyclonal Antibody, PE-Cy7 conjugated

Conjugated Primary Antibodies

Background:

The synucleins, including alpha-synuclein (also designated NACP for nonamyloid component precursor), beta-synuclein (also designated PNP 14 for phospho-neuroprotein 14) and gamma-synuclein (also designated persyn or BCSG1 for breast cancer-specific gene 1) are presynaptic protein abundant in neurons. alpha-synuclein, a component of Alzheimer's disease amyloid plaques, is localized to neuronal cell bodies and synapses. Coordinate expression of alpha-synuclein and beta-synuclein may be important during hematopoietic cell differentiation. In patients with Parkinson's disease, a mutant form of alpha-synuclein has been found and gamma-synuclein is associated with axonal pathology.

Purification: Was purified by Protein A and peptide affinity chromatography.

Storage:

Prepared as lyophilized powder or liquid and shipped on ice. Store at -20°C for one year. Protect from light.

Reconstitution:

If the antibody is in liquid form, no reconstitution needed.

Reconstitution is only required for the lyophilized antibody. Please refer to the reconstitution instruction card in the package.

Size: 100ul or 100ug lyophilized

Concentration: 1ug/uL

Host: Mouse

Reactivities:

Human, Mouse, Rat, Dog, Pig, Cow, Horse, Sheep, Guinea Pig.

Application:

- IF (1:100-500)
- Not yet tested in other applications. Optimal working dilutions must be determined by the end user.

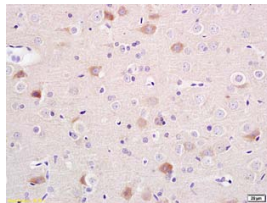
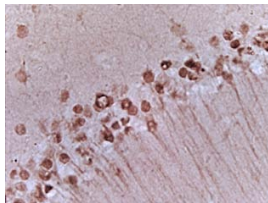
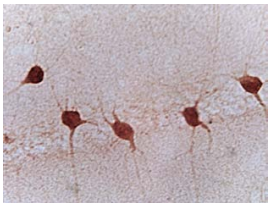
Antibody Type: Polyclonal

Isotype: IgG

Molecular Weight: 15kDa

Preservatives: 10ug/uL BSA and 0.1% NaN₃.

For research use only. CAUTION: Not for human or animal therapeutic or diagnostic use.



For full size images and description please click [HERE](#).