

bs-0017M

• Mouse Anti-Galanin Polyclonal Antibody

Primary Antibodies

Background:

Galanin is a 30 amino acid neuropeptide widely distributed in the peripheral and central nervous systems and endocrine system. The amino acid sequence of galanin is very conserved (almost 90% among species), indicating the importance of the molecule. In the brain, the highest concentrations are observed in the hypothalamus and particularly in the nerve terminals of the median eminence.

Source/Purification:

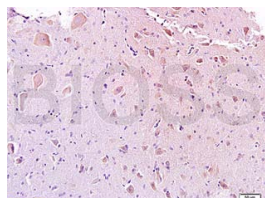
KLH conjugated synthetic peptide derived from human Galanin (33-62aa). Was purified by Protein A and peptide affinity chromatography.

Storage: Prepared as lyophilized powder or liquid and shipped on ice. Store at -20°C for one year.

Reconstitution:

If the antibody is in liquid form, no reconstitution needed.

Reconstitution is only required for the lyophilized antibody. Please refer to the reconstitution instruction card in the package.



For full size images and description please click [HERE](#).

Size: 100ul or 100ug lyophilized

Concentration: 1ug/uL

Host: Mouse

Reactivities:

Human, Mouse, Rat, Chicken, Dog, Pig, Cow, Horse, Sheep, Guinea Pig,

Application:

- ELISA(1:500-1000)
- IP(1:20-100)
- IHC-P(1:100-500)
- IHC-F(1:100-500)
- IF(1:100-500)
- Not yet tested in other applications. Optimal working dilutions must be determined by the end user.

Antibody Type: Polyclonal

Isotype: IgG

Molecular Weight: 3/13kDa

Preservatives: 10ug/uL BSA and 0.1% NaN₃.

For research use only. CAUTION: Not for human or animal therapeutic or diagnostic use.