

## bs-0022R-HRP

### • Rabbit Anti-ERK2/MAPK1 Polyclonal Antibody, HRP conjugated

Conjugated Primary Antibodies

#### Background:

ERK2 is activated by MEK2, which phosphorylates neighbouring threonine 183 and tyrosine 185 residues. ERK2 is a serine/threonine kinase that phosphorylates MAP2 and myelin basic protein. This kinase is an important proximal component of the MAP kinase pathway involved in transmitting the signals from growth factors, neurotransmitters and hormones at the cell surface to the transcriptional events in the nucleus.

**Purification:** Was purified by Protein A and peptide affinity chromatography.

**Storage:** Prepared as lyophilized powder or liquid and shipped on ice. Store at -20°C for one year.

#### Reconstitution:

If the antibody is in liquid form, no reconstitution needed.

Reconstitution is only required for the lyophilized antibody. Please refer to the reconstitution instruction card in the package.

**Size:** 100ul or 100ug lyophilized

**Concentration:** 1ug/uL

**Host:** Rabbit

#### Reactivities:

Human, Mouse, Rat, Chicken, Dog, Pig, Cow, Horse, Rabbit,

#### Application:

- WB(1:100-500)
- ELISA(1:500-1000)
- IHC-P(1:100-500)
- IHC-F(1:100-500)
- Not yet tested in other applications. Optimal working dilutions must be determined by the end user.

**Antibody Type:** Polyclonal

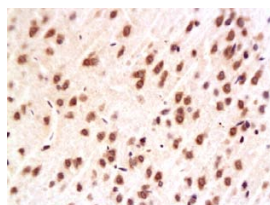
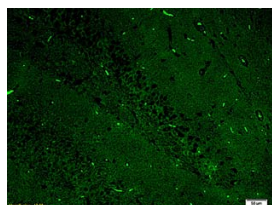
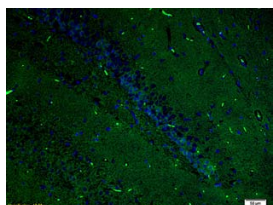
**Isotype:** IgG

**Molecular Weight:** 42kDa

#### Preservatives:

10ug/uL BSA and 0.01% Gentamicin.

For research use only. CAUTION: Not for human or animal therapeutic or diagnostic use.



For full size images and description please click [HERE](#).