

• Rabbit Anti-NPY/Neuropeptide Y Polyclonal Antibody

Primary Antibodies

Background:

Neurobiology

Neuropeptide Y (NPY) is a 36 amino acid peptide neurotransmitter found in the brain and autonomic nervous system. NPY has been associated with a number of physiologic processes in the brain, including the regulation of energy balance, memory and learning, and epilepsy. The main effect is increased food intake and decreased physical activity. NPY is secreted by the hypothalamus, and in addition to increasing food intake, it increases the proportion of energy stored as fat and blocks nociceptive signals to the brain. NPY also augments the vasoconstrictor effects of noradrenergic neurons.

Source/Purification:

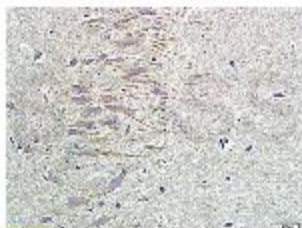
KLH conjugated synthetic peptide derived from human NPY N-terminus. Was purified by Protein A and peptide affinity chromatography.

Storage: Prepared as lyophilized powder or liquid and shipped on ice. Store at -20°C for one year.

Reconstitution:

If the antibody is in liquid form, no reconstitution needed.

Reconstitution is only required for the lyophilized antibody. Please refer to the reconstitution instruction card in the package.



Size: 100ul or 100ug lyophilized

Concentration: 1ug/ul

Host: Rabbit

Reactivities:

Human, Mouse, Rat, Cow, Horse, Rabbit,

Application:

- ELISA(1:500-1000)
- IP(1:20-100)
- IHC-P(1:100-500)
- IHC-F(1:100-500)
- IF(1:100-500)
- Not yet tested in other applications. Optimal working dilutions must be determined by the end user.

Antibody Type: Polyclonal

Isotype: IgG

Molecular Weight: 8kDa

Preservatives:

10ug/ul BSA and 0.1% NaN₃.

For research use only. CAUTION: Not for human or animal therapeutic or diagnostic use.