

bs-0317R-A555

• Rabbit Anti-ILK-1 Polyclonal Antibody, Alexa Fluor 555 conjugated

Conjugated Primary Antibodies

Background:

Transduction of extracellular matrix signals through integrins influences intracellular and extracellular functions, and appears to require interaction of integrin cytoplasmic domains with cellular proteins. Integrin linked kinase (ILK), interacts with the cytoplasmic domain of beta 1 Integrin. ILK encodes a predicted 451 amino acid protein, with an apparent molecular weight of 59 kDa. The ILK protein is a serine/threonine protein kinase with 4 ankyrin like repeats. ILK regulates integrin mediated signal transduction.

The ILK protein is important in different biological pathways such as cell adhesion, anchorage-dependent cell cycle progression, oncogenic transformation, and growth factor signaling. The kinase activity of ILK is low in non-activated cells; its activity is stimulated by cell-ECM interactions and by certain growth factors. 3 Negative regulation of ILK is mediated by two phosphatases: PTEN, a tumor suppressor lipid sphatase, and ILKAP, a PP2C protein phosphatase. In tumor cells that do not express PTEN protein, ILK is constitutively active.

Purification: Was purified by Protein A and peptide affinity chromatography.

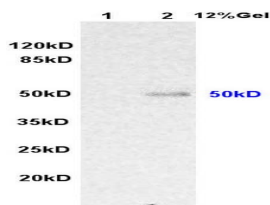
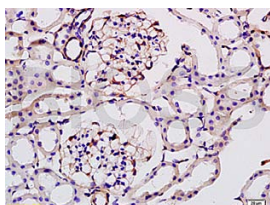
Storage:

Aqueous buffered solution containing 100ug/ml BSA, 50% glycerol and less than 0.09% sodium azide. Store at -20°C for 12 months. Protect from light. [Product without BSA and/or sodium azide is available for special order.]

Reconstitution:

If the antibody is in liquid form, no reconstitution needed.

Reconstitution is only required for the lyophilized antibody. Please refer to the reconstitution instruction card in the package.



Size: 100ul

Concentration: 1ug/uL

Host: Rabbit

Reactivities:

Human, Mouse, Rat, Chicken, Dog, Bovine,

Application:

- IF(1:100-500)
- Not yet tested in other applications. Optimal working dilutions must be determined by the end user.

Antibody Type: Polyclonal

Isotype: IgG

Molecular Weight: 50kDa

Note:

For research use only. CAUTION: Not for human or animal therapeutic or diagnostic use.

For full size images and description please click [HERE](#).