

## • Rabbit Anti-C5a Polyclonal Antibody

Primary Antibodies

### **Background:**

C5a is a cleavage fragment of C5 into C5a and C5b. It induces smooth muscle contraction, increases vascular permeability, causes degranulation of mast cells and basophils, release of lysosomal enzymes and stimulates the directed migration of neutrophils, eosinophils, basophils and monocytes.

### **Source/Purification:**

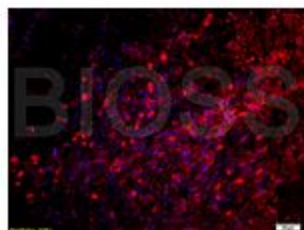
KLH conjugated synthetic peptide derived from human C5a (725-770aa). Was purified by Protein A and peptide affinity chromatography.

**Storage:** Prepared as lyophilized powder or liquid and shipped on ice. Store at -20°C for one year.

### **Reconstitution:**

If the antibody is in liquid form, no reconstitution needed.

Reconstitution is only required for the lyophilized antibody. Please refer to the reconstitution instruction card in the package.



**Size:** 100ul or 100ug lyophilized

**Concentration:** 1ug/uL

**Host:** Rabbit

**Reactivities:** Mouse,

**Application:**

- ELISA(1:500-1000)
- IP(1:20-100)
- IHC-P(1:100-500)
- IHC-F(1:100-500)
- IF(1:100-500)
- Not yet tested in other applications.  
Optimal working dilutions must be determined by the end user.

**Antibody Type:** Polyclonal

**Isotype:** IgG

**Molecular Weight:** 113kDa

**Preservatives:**

10ug/uL BSA and 0.1% NaN<sub>3</sub>.

For research use only. CAUTION: Not for human or animal therapeutic or diagnostic use.