

## • Rabbit Anti-Leptin Polyclonal Antibody

### Primary Antibodies

#### Background:

Leptin, the product of the ob (obese) gene, is a 16kD protein consisting of 146 amino acid residues. Leptin is produced in the adipose tissue, and is considered to play an important role in appetite control, fat metabolism and regulation of body weight. It targets the central nervous system, particularly hypothalamus, affecting food intake. Leptin levels are high in most obese individuals. Studies have shown that it may also influence reproductive function.

#### Source/Purification:

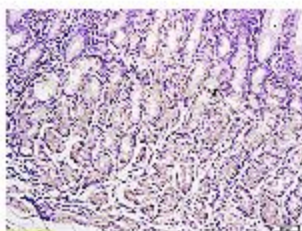
KLH conjugated synthetic peptide derived from human Leptin N-terminus. Was purified by Protein A and peptide affinity chromatography.

**Storage:** Prepared as lyophilized powder or liquid and shipped on ice. Store at -20°C for one year.

#### Reconstitution:

If the antibody is in liquid form, no reconstitution needed.

Reconstitution is only required for the lyophilized antibody. Please refer to the reconstitution instruction card in the package.



**Size:** 100ul or 100ug lyophilized

**Concentration:** 1ug/uL

**Host:** Rabbit

#### Reactivities:

Human, Mouse, Rat, Pig, Sheep,

#### Application:

- WB(1:100-500)
- ELISA(1:500-1000)
- IP(1:20-100)
- IHC-P(1:100-500)
- IHC-F(1:100-500)
- IF(1:100-500)
- Not yet tested in other applications.  
Optimal working dilutions must be determined by the end user.

**Antibody Type:** Polyclonal

**Isotype:** IgG

**Molecular Weight:** 16kDa

#### Preservatives:

10ug/uL BSA and 0.1% NaN<sub>3</sub>.

For research use only. CAUTION: Not for human or animal therapeutic or diagnostic use.