

bs-0580R

• Rabbit Anti-SOCS3 Polyclonal Antibody

Primary Antibodies

Background:

Cytokines signal transduction pathway suppressor of cytokine signaling 3 positive cells in the brain are widely distributed, some of the cytoplasm of neurons, nerve fibers, glial cell line. suppressor of cytokine signaling 3 studies in recent years to prove: vascular endothelial cells also showed immune SOCS 3-positive.

Source/Purification:

KLH conjugated synthetic peptide derived from human Socs 3 C-terminus. Was purified by Protein A and peptide affinity chromatography.

Storage:

Aqueous buffered solution containing 100ug/ml BSA, 50% glycerol and less than 0.09% sodium azide. Store at -20°C for 12 months. [Product without BSA and/or sodium azide is available for special order.]

Reconstitution:

If the antibody is in liquid form, no reconstitution needed.

Reconstitution is only required for the lyophilized antibody. Please refer to the reconstitution instruction card in the package.

Size: 100ul

Concentration: 1ug/uL

Host: Rabbit

Reactivities:

Human, Mouse, Rat, Chicken, Dog, Pig, Bovine, Rabbit,

Application:

- WB(1:100-500)
- ELISA(1:500-1000)
- IHC-P(1:100-500)
- IF(1:100-500)
- Not yet tested in other applications. Optimal working dilutions must be determined by the end user.

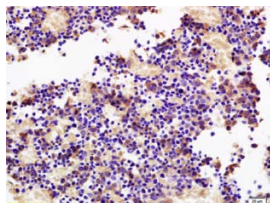
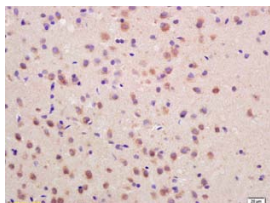
Antibody Type: Polyclonal

Isotype: IgG

Molecular Weight: 25kDa

Note:

For research use only. CAUTION: Not for human or animal therapeutic or diagnostic use.



For full size images and description please click [HERE](#).