

## bs-0649R-A647

### • Rabbit Anti-CD68 Polyclonal Antibody, Alexa Fluor 647 conjugated

Conjugated Primary Antibodies

#### Background:

This gene encodes a 110-kD transmembrane glycoprotein that is highly expressed by human monocytes and tissue macrophages. It is a member of the lysosomal/endosomal-associated membrane glycoprotein (LAMP) family. The protein primarily localizes to lysosomes and endosomes with a smaller fraction circulating to the cell surface. It is a type I integral membrane protein with a heavily glycosylated extracellular domain and binds to tissue- and organ-specific lectins or selectins. The protein is also a member of the scavenger receptor family. Scavenger receptors typically function to clear cellular debris, promote phagocytosis, and mediate the recruitment and activation of macrophages. Alternative splicing results in multiple transcripts encoding different isoforms. [provided by RefSeq, Jul 2008].

**Purification:** Was purified by Protein A and peptide affinity chromatography.

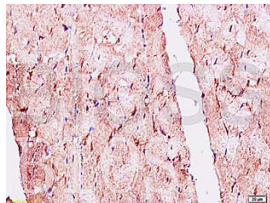
#### Storage:

Aqueous buffered solution containing 100ug/ml BSA, 50% glycerol and less than 0.09% sodium azide. Store at -20°C for 12 months. Protect from light. [Product without BSA and/or sodium azide is available for special order.]

#### Reconstitution:

If the antibody is in liquid form, no reconstitution needed.

Reconstitution is only required for the lyophilized antibody. Please refer to the reconstitution instruction card in the package.



For full size images and description please click [HERE](#).

**Size:** 100ul

**Concentration:** 1ug/uL

**Host:** Rabbit

**Reactivities:** Mouse,Rat,

**Application:**

- FCM(1:100-500)
- IF(1:100-500)
- Not yet tested in other applications. Optimal working dilutions must be determined by the end user.

**Antibody Type:** Polyclonal

**Isotype:** IgG

**Molecular Weight:** 37kDa

**Note:**

For research use only. CAUTION: Not for human or animal therapeutic or diagnostic use.