

## • Rabbit Anti-NF-M/Neurofilament M Polyclonal Antibody

### Primary Antibodies

#### Background:

Neurofilaments are the 10nm or intermediate filament proteins found specifically in neurons, and are composed predominantly of three major proteins called neurofilament light (NF-L), neurofilament medium (NF-M) and neurofilament heavy (NF-H). Neurofilament medium runs on SDS-PAGE gels in the range 145-170 kDa, with some variation in different species. Antibodies to this protein are useful to identify neurons and their processes in tissue sections and in tissue culture. Neurofilament medium can also be useful in studies of neurofilament accumulations seen in many neurological diseases, such as Lou Gehrig's disease or Alzheimer's disease.

#### Source/Purification:

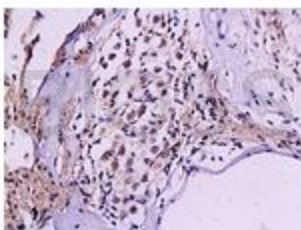
KLH conjugated synthetic peptide derived from human NF-M N-terminus. Was purified by Protein A and peptide affinity chromatography.

**Storage:** Prepared as lyophilized powder or liquid and shipped on ice. Store at -20°C for one year.

#### Reconstitution:

If the antibody is in liquid form, no reconstitution needed.

Reconstitution is only required for the lyophilized antibody. Please refer to the reconstitution instruction card in the package.



**Size:** 100ul or 100ug lyophilized

**Concentration:** 1ug/uL

**Host:** Rabbit

**Reactivities:** Human, Mouse, Rat, Pig, Cow,

#### Application:

- WB(1:100-500)
- ELISA(1:500-1000)
- IP(1:20-100)
- IHC-P(1:100-500)
- IHC-F(1:100-500)
- IF(1:100-500)
- Not yet tested in other applications.  
Optimal working dilutions must be determined by the end user.

**Antibody Type:** Polyclonal

**Isotype:** IgG

**Molecular Weight:** 102kDa

#### Preservatives:

10ug/uL BSA and 0.1% NaN<sub>3</sub>.

For research use only. CAUTION: Not for human or animal therapeutic or diagnostic use.