

## • Rabbit Anti-Megsin Polyclonal Antibody

### Primary Antibodies

#### Background:

Serpin B7 is a serine proteinase inhibitor of the ovalbumin like B clade of serpins. It was first discovered in a search for agents responsible for thrombopoiesis, and maturation of megakaryocytes. SerpinB7 was identified as a protein that increased acetylcholine esterase stimulation from bone marrow progenitor cells, and injection of SerpinB7 in mice induced a 40% increase in platelets compared to controls. Shortly thereafter, in a search for kidney specific genes, SerpinB7 was described as a protein specific to mesangial cells, and was named megin to indicate the tissue specificity of the protein.

#### Source/Purification:

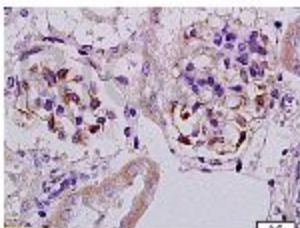
KLH conjugated synthetic peptide derived from human Megsin (295-330aa). Was purified by Protein A and peptide affinity chromatography.

**Storage:** Prepared as lyophilized powder or liquid and shipped on ice. Store at -20°C for one year.

#### Reconstitution:

If the antibody is in liquid form, no reconstitution needed.

Reconstitution is only required for the lyophilized antibody. Please refer to the reconstitution instruction card in the package.



**Size:** 100ul or 100ug lyophilized

**Concentration:** 1ug/uL

**Host:** Rabbit

**Reactivities:** Human, Mouse, Rat,

#### Application:

- WB(1:100-500)
  - ELISA(1:500-1000)
  - IP(1:20-100)
  - IHC-P(1:100-500)
  - IHC-F(1:100-500)
  - IF(1:100-500)
  - Not yet tested in other applications.
- Optimal working dilutions must be determined by the end user.

**Antibody Type:** Polyclonal

**Isotype:** IgG

**Molecular Weight:** 42kDa

#### Preservatives:

10ug/uL BSA and 0.1% NaN<sub>3</sub>.

For research use only. CAUTION: Not for human or animal therapeutic or diagnostic use.